

PRINTABLE INFO SHEET

Series: Ultra

Model: 2P2409-X Ultra 10



About This Model

Style: Ranch / Bedrooms: 3 / Bathrooms: 2 / Square Feet: 1911

CUSTOMER CONTACT

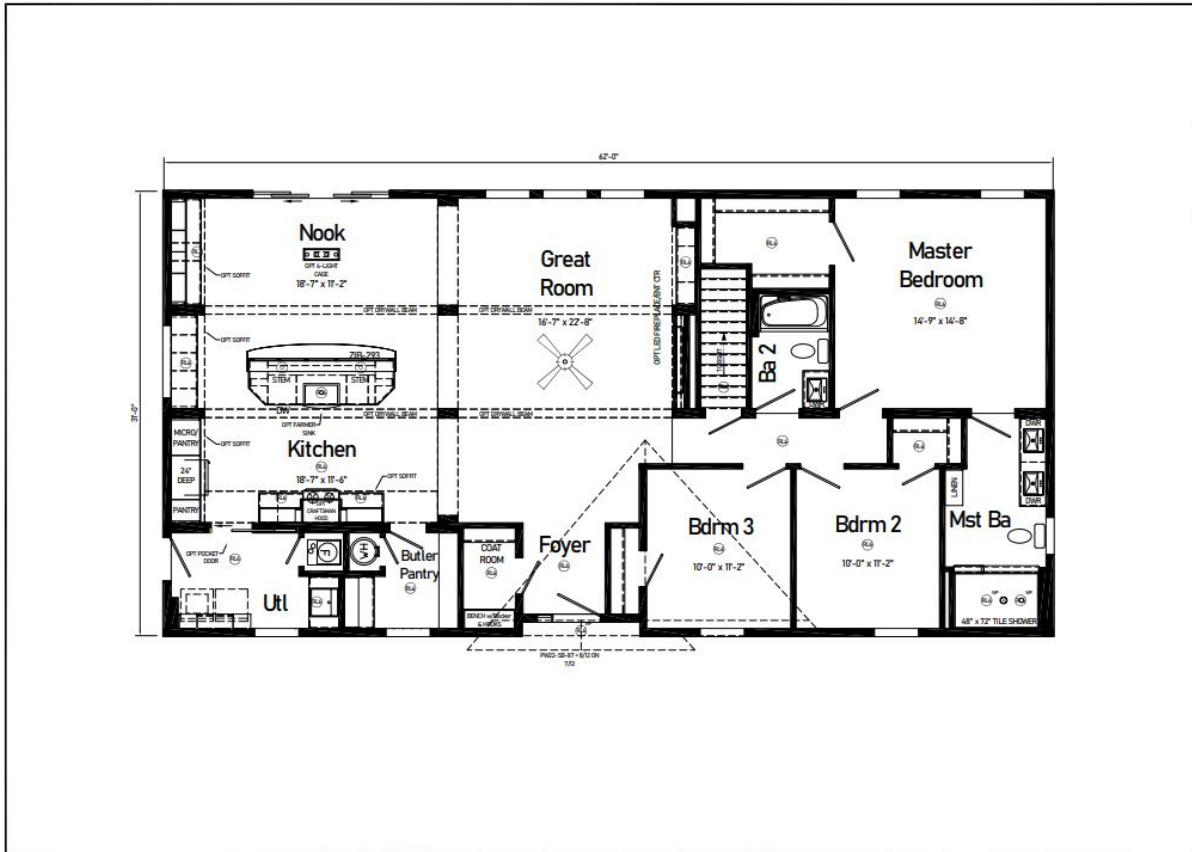
Notes:

PRINTABLE INFO SHEET

Series: Ultra
 Model: 2P2409-X Ultra 10



Floorplan



Builder: Pennwest Homes	Address: 4 Pennwest Way Emlenton, PA 16373	Callout: 3162	Revisions:	Scale: 1" = 1'-0"	Date:	Cust: Fall Show	Model/Eng. No.: 2P2409-XI
Title: Literature Brochure			Drawn By:	Reference: NONE		Dr: Pennwest S/N EV-05070	Pg: -----

N:\PENNWEST\0192-2P2409-XI

CUSTOMER CONTACT

Notes:

PRINTABLE INFO SHEET

Series: Ultra

Model: 2P2409-X Ultra 10



Standards & Features

HOME COMPONENTS

- Complete Water Lines Supplied
- Complete Electrical
- Drain and Gas Lines Stubbed Through Floor
- Complete Heat System
- Complete Air Return System

INTERIOR

- Primed Drywall Throughout
- Smooth Flat Ceiling Throughout
- 8'0" Ceiling Height
- 25 oz. Carpeting
- Rebond Carpet Pad - 5lb
- Tackstrip Carpet Installation
- Foyer Entry with Vinyl Flooring
- No-Wax Vinyl Floor Coverings by Congoleum
- 5 Arm Dining Room Light (Brushed Nickel or Black)
- Recessed LED Lights T/O
- 36" Doors & Where Available
- White Painted 6-Panel Pre-Hung Doors with Mortise Hinges
- Metal Interior Passage Sets
- Smoke Detectors with Battery Back-Up
- Wire Shelving in Guest Closet
- White Painted Pine Moldings Throughout

KITCHEN

- Tip-Out Trays at Sink
- Stainless Steel Sink-33x22x8

KITCHEN (continued)

- Brushed Nickel Single Lever Faucet
- Power Range Hood with Light
- 30" Deluxe Gas Range
- 18 Cu. Ft. Frost Free Refrigerator
- 1 USB II Receptacle

CABINETS

- Evermore Custom Cabinetry (KCMA Certified)
- French Country or Barnwood Oak & Overlay Mission Flat Panel Cabinet Doors
- Hardwood Oak Cabinet Face Frames
- Transitional Cabinet Pulls (Brushed Nickel or Black)
- Hidden Cabinet Hinges
- Choice of Cabinet System
 - City Scape 30"/36"
 - 36" Cabinets w/ Crouse Crown
 - 30" Cabinets w/ Crouse Crown & Soffit
- Adjustable Shelves in Overhead Cabinets
- Drawer-Over-Door Base Cabinets
- Soft Close Undermount Drawer Guides
- Base and Center Shelves in Base Cabinets
- Dovetail Drawer Construction
- Laminate Countertops with Laminate Edging
- 4" Laminate Backsplash
- Kitchen Island & Where Available

BATHS

- Curved Front Garden Tub in Master
- Bath - Where Available
- Tub Overflows

CUSTOMER CONTACT

Notes:

PRINTABLE INFO SHEET

Series: Ultra

Model: 2P2409-X Ultra 10



Standards & Features (continued)

BATHS (continued)

Recessed LED Light over Tub in Master Bath
1.6 Gallon Per Flush Elongated Toilets
China Sinks with Overflows and Pop-Up Drains
Lighted Vent Fan in Each Bath
2-Light Vanity Light Bath 2
Recessed LED Lights over Master Vanity
Brushed Nickel Metal Faucets
36" High Vanities
Anti-Scald Valves on Showers and Tubs
Linen - Where Available

BEDROOMS

Switched Receptcs
Egress Window in Each Bedroom
Wire Shelving in Closets
Switched 4" Recessed LED Light
in All Walk-In Closets

INSULATION

R-21 Fiberglass Insulation in Walls
R-38 Batt Insulation in Ceiling

UTILITIES

200 AMP Electrical Service
Plumb and Wire for Washer
Wire for Dryer
Recessed Dryer Vent Box
Programmable Thermostat with 8-Wires
Main Water Line Shut-Off Valve
Water Shut-Off Valves where Accessible
One Exterior Water Faucet
50 Gallon Electric Water Heater with Pan
Energy Efficient 90 Plus Gas Furnace

UTILITIES (continued)

Perimeter Heat System with Fiberglass
Heat Ducts

EXTERIOR

Cage Exterior Light at Front and Rear Door
Two GFI-Protected Exterior Receptacles
Vinyl Ship Lap Siding
O.S.B. Sheathing Under Siding
Wind Wrap Air Infiltration Barrier
5/12 Pitch Roof with 12" Eaves and
Overhangs
Architectural Shingles
Ridgevent Roof Ventilation System
Ice Shield
3/0 x 6/8 White 6-Panel Front & Rear
Door with Deadbolt Locks
Vinyl Insulated Argon Filled Windows
with Low-E Glass (no grids)
Lineals on Front Door Side

CONSTRUCTION

2x10 Transverse Floor System on
16" Centers with 23/32" OSB T&G
Floor Decking**
2x6 Exterior Walls on 16" Centers**
2x4 Interior Walls
90 Mile Exposure C Wind Load Design
40# Roof Load Design

Ultra Additional Features

*Double Sinks in Master Bath
*4'x6' Ceramic Tile Shower at Master Bath
*Floorte Pro Series 7 Flooring (per print)

CUSTOMER CONTACT

Notes:
