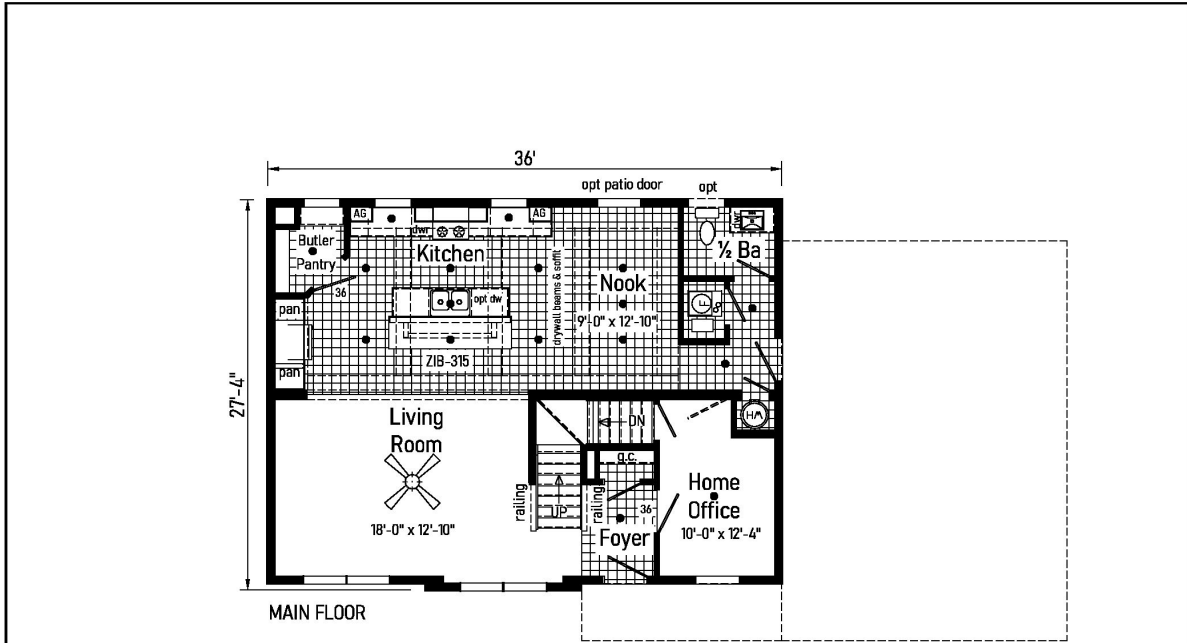


# PRINTABLE INFO SHEET

Series: Magnifique  
 Model: 6P2601-R Quatre Magnifique



MAIN FLOOR

6P2601-R 28x36 Approx. 1943 Sq. Ft.

## Magnifique Quatee

● = Std. can light  
 AG = Appliance Garage

Builder: Pennwest Homes	Callout: 28x36	Revisions:	Scale: 1/8" = 1'-0"	Date: 04/11/2022	Cust: -	Model/Eng No.: 6P2601-R
Title: Literature		Drawn By: OY	Reference: NONE	Dir: -	S/N: .	LIT

AL/PENNWEST/PP/28-6P2601-R

## About This Model

Style: Ranch / Bedrooms: 3 / Bathrooms: 2 / Square Feet: 1731

## CUSTOMER CONTACT

Notes:

---



---



---



---

## PRINTABLE INFO SHEET

**Series: Magnifique**

**Model: 6P2601-R Quatre Magnifique**



## Standards & Features

### HOME COMPONENTS

Complete Water Lines Supplied  
Complete Electrical  
Drain and Gas Lines Stubbed Through Floor  
Complete Heat System  
Complete Air Return System

### INTERIOR

Primed Drywall Throughout  
Smooth Flat Ceiling Throughout  
8'0" Ceiling Height  
25 oz. Carpeting  
Rebond Carpet Pad - 5lb  
Tackstrip Carpet Installation  
Foyer Entry with Vinyl Flooring  
No-Wax Vinyl Floor Coverings by Congoleum  
5 Arm Dining Room Light (Brushed Nickel or Black)  
Recessed LED Lights T/O  
36" Doors & Where Available  
White Painted 6-Panel Pre-Hung Doors with Mortise Hinges  
Metal Interior Passage Sets  
Smoke Detectors with Battery Back-Up  
Wire Shelving in Guest Closet  
White Painted Pine Moldings Throughout

### KITCHEN

Tip-Out Trays at Sink  
Stainless Steel Sink-33x22x8

### KITCHEN (continued)

Brushed Nickel Single Lever Faucet  
Power Range Hood with Light  
30" Deluxe Gas Range  
18 Cu. Ft. Frost Free Refrigerator  
1 USB II Receptacle

### CABINETRY

Evermore Custom Cabinetry (KCMA Certified)  
French Country or Barnwood Oak & Overlay Mission Flat Panel Cabinet Doors  
Hardwood Oak Cabinet Face Frames  
Transitional Cabinet Pulls (Brushed Nickel or Black)  
Hidden Cabinet Hinges  
Choice of Cabinet System  
- City Scape 30"/36"  
- 36" Cabinets w/ Crouse Crown  
- 30" Cabinets w/ Crouse Crown & Soffit  
Adjustable Shelves in Overhead Cabinets  
Drawer-Over-Door Base Cabinets  
Soft Close Undermount Drawer Guides  
Base and Center Shelves in Base Cabinets  
Dovetail Drawer Construction  
Laminate Countertops with Laminate Edging  
4" Laminate Backsplash  
Kitchen Island & Where Available

### BATHS

Curved Front Garden Tub in Master  
Bath - Where Available  
Tub Overflows

## CUSTOMER CONTACT

Notes:

---

---

---

---

# PRINTABLE INFO SHEET

**Series: Magnifique**

**Model: 6P2601-R Quatre Magnifique**



## Standards & Features (continued)

### BATHS (continued)

- Recessed LED Light over Tub in Master Bath
- 1.6 Gallon Per Flush Elongated Toilets
- China Sinks with Overflows and Pop-Up Drains
- Lighted Vent Fan in Each Bath
- 2-Light Vanity Light Bath 2
- Recessed LED Lights over Master Vanity
- Brushed Nickel Metal Faucets
- 36" High Vanities
- Anti-Scald Valves on Showers and Tubs
- Linen - Where Available

### BEDROOMS

- Switched Receptcs
- Egress Window in Each Bedroom
- Wire Shelving in Closets
- Switched 4" Recessed LED Light in All Walk-In Closets

### INSULATION

- R-21 Fiberglass Insulation in Walls
- R-38 Batt Insulation in Ceiling

### UTILITIES

- 200 AMP Electrical Service
- Plumb and Wire for Washer
- Wire for Dryer
- Recessed Dryer Vent Box
- Programmable Thermostat with 8-Wires
- Main Water Line Shut-Off Valve
- Water Shut-Off Valves where Accessible
- One Exterior Water Faucet
- 50 Gallon Electric Water Heater with Pan
- Energy Efficient 90 Plus Gas Furnace

### UTILITIES (continued)

- Perimeter Heat System with Fiberglass Heat Ducts

### EXTERIOR

- Cage Exterior Light at Front and Rear Door
- Two GFI-Protected Exterior Receptacles
- Vinyl Ship Lap Siding
- O.S.B. Sheathing Under Siding
- Wind Wrap Air Infiltration Barrier
- 5/12 Pitch Roof with 12" Eaves and Overhangs
- Architectural Shingles
- Ridgevent Roof Ventilation System
- Ice Shield
- 3/0 x 6/8 White 6-Panel Front & Rear Door with Deadbolt Locks
- Vinyl Insulated Argon Filled Windows with Low-E Glass (no grids)
- Lineals on Front Door Side

### CONSTRUCTION

- 2x10 Transverse Floor System on 16" Centers with 23/32" OSB T&G Floor Decking\*\*
- 2x6 Exterior Walls on 16" Centers\*\*
- 2x4 Interior Walls
- 90 Mile Exposure C Wind Load Design
- 40# Roof Load Design

### Magnifique Additional Features

- \*Drywall Beams with Cove in Kitchen/Nook
- \*Full Mosaic Backsplash in Kitchen
- \*Gooseneck Kitchen Faucet w/ Pull Down

## CUSTOMER CONTACT

Notes:

---

---

---

---

## PRINTABLE INFO SHEET

Series: Magnifique

Model: 6P2601-R Quatre Magnifique



## Standards & Features (continued)

### Magnifique Additional Features (continued)

- \*Additional LED Recessed Lighting
- \*4'x6' Ceramic Shower in Master Bath
- \*Double Vanity w/ Towel Tower in Master
- \*Transom Window 2nd Bath Tub/Shower
- \*Unique & Contemporary Kitchen Island
- \*Butler Pantry
- \*Ceiling Fan
- \*30" Cabinets with Crown & Drywall Soffit
- \*Soffit over Master Vanity with Recessed LED Lights

## CUSTOMER CONTACT

Notes:

---

---

---

---