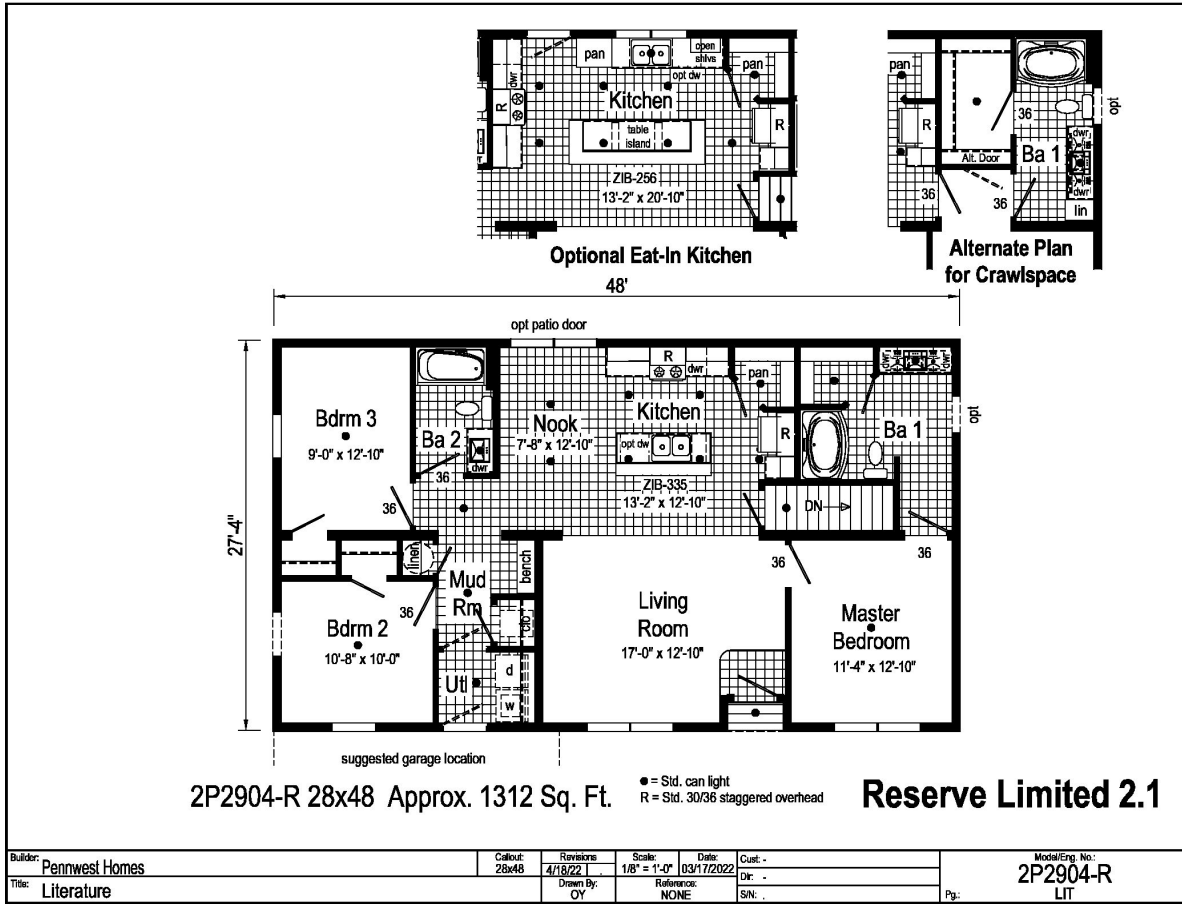


PRINTABLE INFO SHEET

Series: Pennwest Limited
 Model: 2P2904-R Reserved Limited
 2.1



About This Model

Style: Modular / Bedrooms: 3 / Bathrooms: 2 / Square Feet: 1312

CUSTOMER CONTACT

Notes:

PRINTABLE INFO SHEET

Series: Pennwest Limited
Model: 2P2904-R Reserved Limited
2.1



Standards & Features

INTERIOR

Primed Drywall Throughout
Smooth Flat Ceiling Throughout
8'0" Ceiling Height
25 oz. Carpeting: Bedrooms
Rebond Carpet Pad - 5 lb
Tackstrip Carpet Installation
Foyer Entry with Vinyl Flooring
No-Wax Vinyl Floor Coverings
by Congoleum: Kitchen, Nook, Foyer,
Utility, Great Room,
Recessed LED Lights
-5 Kitchen x 2 Nook-
36" Doors ‐ Where Available
White Painted 6-Panel
Pre-Hung Door with Mortise Hinges
Metal Interior Passage Sets
Smoke Detectors
with Battery Back-Up
Wire Shelving in Guest Closet
White Painted Pine Molding Throughout

BEDROOMS

Ceiling Light
Egress Window in Each Bedroom
Wire Shelving in Closets
Switched 4" Recessed LED Light
in All Walk-In Closets

BATHS

Curved Front Garden Tub in Master
Bath - Where Available
Tub Overflows

BATHS (continued)

China Sinks with Overflows &
Pop-Up Drains
Lighted Vent Fan in Each Bath
LED Lights
Brushed Nickel Metal Faucets
36" High Vanities
Anti-Scald Valves on Showers and Tubs
Linen - Where Available

KITCHEN

Stainless Steel Sink-33x22x8
Brushed Nickel Single Lever Faucet
Power Range Hood with Light
1 USB II Receptacle
CABINETRY
Evermore Custom Cabinetry
(KCMA Certified)
French Country or Barnwood Oak
¾ Overlay Mission Flat Panel Cabinet Doors
Hardwood Oak Cabinet Face Frames
Transitional Cabinet Pulls
(Brushed Nickel or Black)
Hidden Cabinet Hinges
City Scape Cabinet System
Adjustable Shelves in Overhead Cabinets
Drawer-Over-Door Base Cabinets
Soft Close Undermount Drawer Guides
Base and Center Shelves in Base Cabinets
Dovetail Drawer Construction
Laminate Countertops with Laminate Edging
4" Laminate Backsplash

CUSTOMER CONTACT

Notes:

PRINTABLE INFO SHEET

Series: Pennwest Limited
Model: 2P2904-R Reserved Limited
2.1



Standards & Features (continued)

KITCHEN (continued)

Kitchen Island ‐ Where Available

UTILITIES

200 AMP Electrical Service
Plumb and Wire for Washer
Wire for Dryer
Plumb for Dishwasher
Recessed Dryer Vent Box
Programmable Thermostat with 8-Wires
Main Water Line Shut-Off Valve
Water Shut-Off Valves where Accessible
One Exterior Water Faucet
Energy Efficient 90 Plus Gas Furnace
Perimeter Heat boots & registers

INSULATION

R-21 Fiberglass Insulation in Walls
R-38 Batt Insulation in Ceiling

EXTERIOR

5/12 Roof Pitch
Cage Exterior Light at
Front and Rear Door
Two GFI-Protected Exterior Receptacles
Vinyl Ship Lap Siding
O.S.B. Sheathing Under Siding
Wind Wrap Air Infiltration Barrier
12" Eaves and Overhangs
Architectural Shingles
Ridge-vent Roof Ventilation System
Ice Shield
3/0 x 6/8 White 6-Panel Front & Rear
Door with Deadbolt Locks

EXTERIOR (continued)

Vinyl Insulated Argon Filled Windows
with Low-E Glass (no grids)
Lineals on Front Door Side

CONSTRUCTION

2x10 Transverse Floor System on
16" Centers with 23/32" OSB T&G
Floor Decking**
2x6 Exterior Walls on 16" Centers**
2x4 Interior Walls
90 Mile Exposure C Wind Load Design
40# Roof Load Design

-LIMITED-

Omit Basement Stairwell
Superior Bracing
Exterior Water Faucet Extra
Single Bowl Kitchen Sink
50 Gallon Electric Hot Water Heater
Heating Package:
(Furnace, return air
(No trunk lines available) (Gas or Electric)
½ lite Pembroke
Single Full view door
60" Fiberglass Shower
Vinyl Sliding Glass Door
Whole House Ventilation Fan
Flood Light Shipped Loose
Photo Electric Smoke Detector
Photo Electric Smoke Detector with Carbo Monoxide
Phone Jack
Junction Boxes with Conduit

CUSTOMER CONTACT

Notes:

PRINTABLE INFO SHEET

Series: Pennwest Limited

Model: 2P2904-R Reserved Limited

2.1



Standards & Features (continued)

-LIMITED- (continued)

Coastal Shores Siding

5/12 60#, 80# and 100#

7/12 Non-Storage 40#, 60#, 80# and 100#

Wind Zones

Seismic Zones

Tru Spirit Carpet

Floorte Shipped Loose

Omit Carpet

Cabinet Colors

Double Sink in Master

Utility Sink

Pearl Appliance Pkg

(gas or electric)

Labels and Codes

CUSTOMER CONTACT

Notes:
