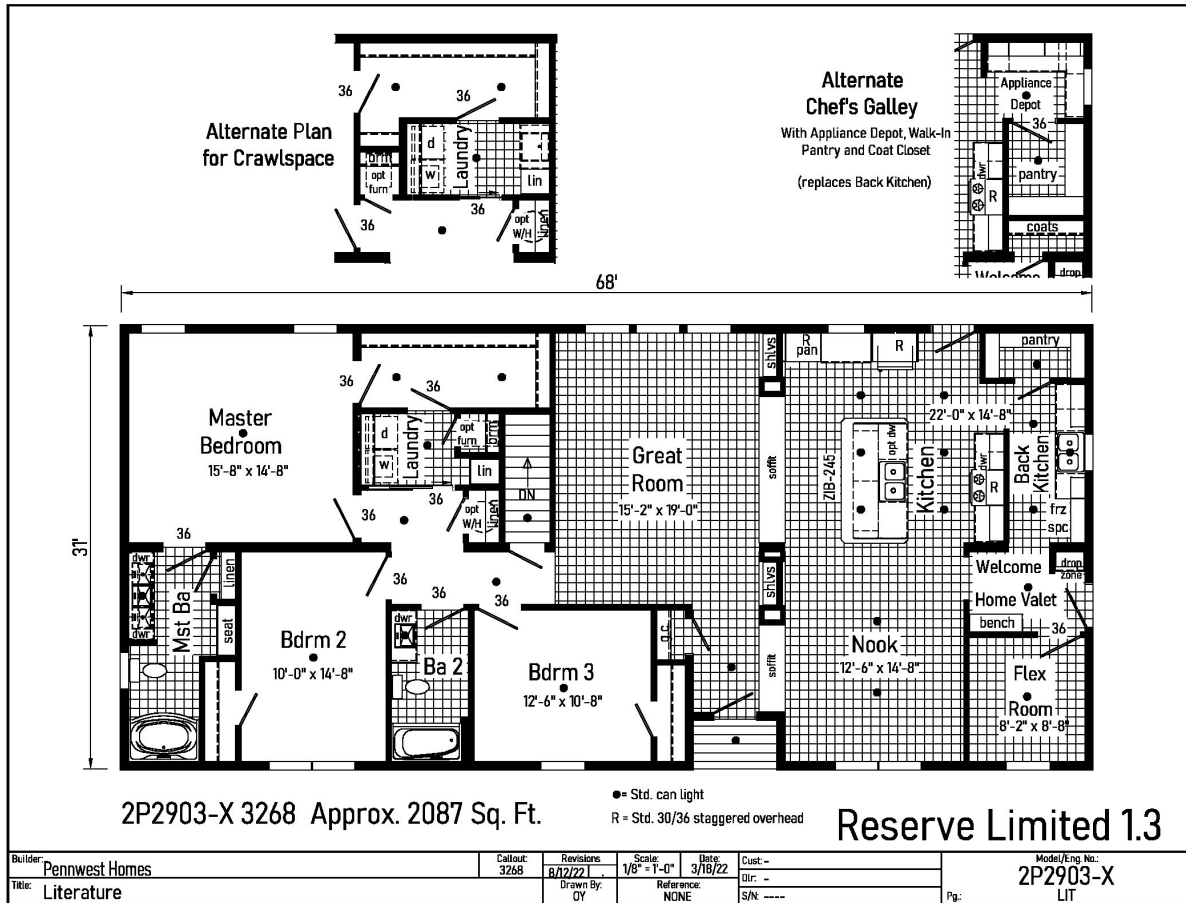


PRINTABLE INFO SHEET

Series: Pennwest Limited
 Model: 2P2903-X Reserved Limited
 1.3



About This Model

Style: Modular / Bedrooms: 3 / Bathrooms: 2 / Square Feet: 2087

CUSTOMER CONTACT

Notes: _____

PRINTABLE INFO SHEET

Series: Pennwest Limited
Model: 2P2903-X Reserved Limited
1.3



Standards & Features

INTERIOR

Primed Drywall Throughout
Smooth Flat Ceiling Throughout
8'0" Ceiling Height
25 oz. Carpeting: Bedrooms
Rebond Carpet Pad - 5 lb
Tackstrip Carpet Installation
Foyer Entry with Vinyl Flooring
No-Wax Vinyl Floor Coverings
by Congoleum: Kitchen, Nook, Foyer,
Utility, Great Room,
Recessed LED Lights
-5 Kitchen x 2 Nook-
36" Doors ‐ Where Available
White Painted 6-Panel
Pre-Hung Door with Mortise Hinges
Metal Interior Passage Sets
Smoke Detectors
with Battery Back-Up
Wire Shelving in Guest Closet
White Painted Pine Molding Throughout

BEDROOMS

Ceiling Light
Egress Window in Each Bedroom
Wire Shelving in Closets
Switched 4" Recessed LED Light
in All Walk-In Closets

BATHS

Curved Front Garden Tub in Master
Bath - Where Available
Tub Overflows

BATHS (continued)

China Sinks with Overflows & Pop-Up Drains
Lighted Vent Fan in Each Bath
LED Lights
Brushed Nickel Metal Faucets
36" High Vanities
Anti-Scald Valves on Showers and Tubs
Linen - Where Available

KITCHEN

Stainless Steel Sink-33x22x8
Brushed Nickel Single Lever Faucet
Power Range Hood with Light
1 USB II Receptacle
CABINETRY
Evermore Custom Cabinetry
(KCMA Certified)
French Country or Barnwood Oak
¾ Overlay Mission Flat Panel Cabinet Doors
Hardwood Oak Cabinet Face Frames
Transitional Cabinet Pulls
(Brushed Nickel or Black)
Hidden Cabinet Hinges
City Scape Cabinet System
Adjustable Shelves in Overhead Cabinets
Drawer-Over-Door Base Cabinets
Soft Close Undermount Drawer Guides
Base and Center Shelves in Base Cabinets
Dovetail Drawer Construction
Laminate Countertops with Laminate Edging
4" Laminate Backsplash

CUSTOMER CONTACT

Notes:

PRINTABLE INFO SHEET

Series: Pennwest Limited
Model: 2P2903-X Reserved Limited
1.3



Standards & Features (continued)

KITCHEN (continued)

Kitchen Island ‐ Where Available

UTILITIES

- 200 AMP Electrical Service
- Plumb and Wire for Washer
- Wire for Dryer
- Plumb for Dishwasher
- Recessed Dryer Vent Box
- Programmable Thermostat with 8-Wires
- Main Water Line Shut-Off Valve
- Water Shut-Off Valves where Accessible
- One Exterior Water Faucet
- Energy Efficient 90 Plus Gas Furnace
- Perimeter Heat boots & registers

INSULATION

- R-21 Fiberglass Insulation in Walls
- R-38 Batt Insulation in Ceiling

EXTERIOR

- 5/12 Roof Pitch
- Cage Exterior Light at Front and Rear Door
- Two GFI-Protected Exterior Receptacles
- Vinyl Ship Lap Siding
- O.S.B. Sheathing Under Siding
- Wind Wrap Air Infiltration Barrier
- 12" Eaves and Overhangs
- Architectural Shingles
- Ridge-vent Roof Ventilation System
- Ice Shield
- 3/0 x 6/8 White 6-Panel Front & Rear Door with Deadbolt Locks

EXTERIOR (continued)

- Vinyl Insulated Argon Filled Windows with Low-E Glass (no grids)
- Lineals on Front Door Side

CONSTRUCTION

- 2x10 Transverse Floor System on 16" Centers with 23/32" OSB T&G Floor Decking**
- 2x6 Exterior Walls on 16" Centers**
- 2x4 Interior Walls
- 90 Mile Exposure C Wind Load Design
- 40# Roof Load Design

-LIMITED-

- Omit Basement Stairwell
- Superior Bracing
- Exterior Water Faucet Extra
- Single Bowl Kitchen Sink
- 50 Gallon Electric Hot Water Heater
- Heating Package: (Furnace, return air) (No trunk lines available) (Gas or Electric)
- 1/2" lite Pembroke
- Single Full view door
- 60" Fiberglass Shower
- Vinyl Sliding Glass Door
- Whole House Ventilation Fan
- Flood Light Shipped Loose
- Photo Electric Smoke Detector
- Photo Electric Smoke Detector with Carbo Monoxide
- Phone Jack
- Junction Boxes with Conduit

CUSTOMER CONTACT

Notes:

PRINTABLE INFO SHEET

Series: Pennwest Limited
Model: 2P2903-X Reserved Limited
1.3



Standards & Features (continued)

-LIMITED- (continued)

- Coastal Shores Siding
- 5/12 60#, 80# and 100#
- 7/12 Non-Storage 40#, 60#, 80# and 100#
- Wind Zones
- Seismic Zones
- Tru Spirit Carpet
- Floorte Shipped Loose
- Omit Carpet
- Cabinet Colors
- Double Sink in Master
- Utility Sink
- Pearl Appliance Pkg
(gas or electric)
- Labels and Codes

CUSTOMER CONTACT

Notes:
