

PRINTABLE INFO SHEET

Series: Pennwest Limited

Model: 2P2902-X Reserved Limited

1.2



About This Model

Style: Modular / Bedrooms: 3 / Bathrooms: 2 / Square Feet: 1846

CUSTOMER CONTACT

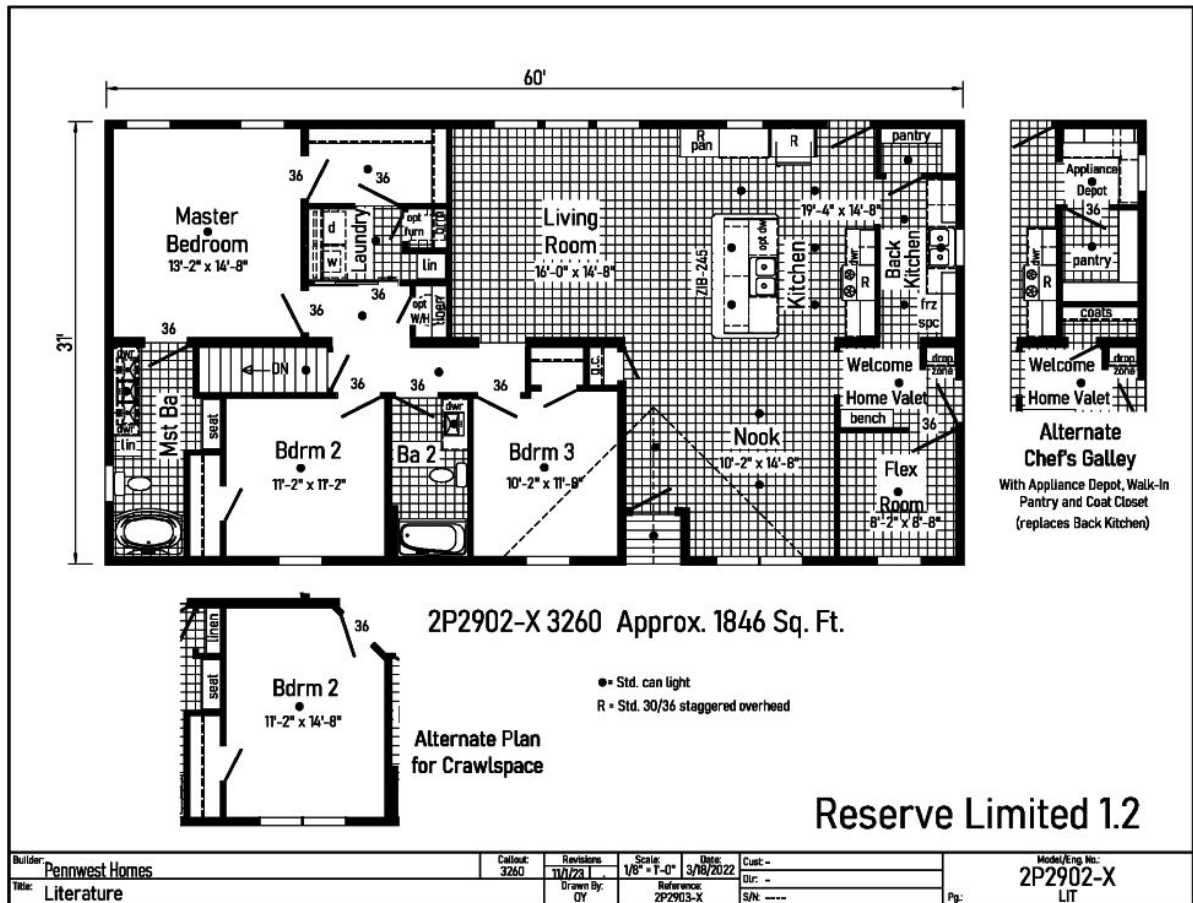
Notes:

PRINTABLE INFO SHEET

Series: Pennwest Limited
Model: 2P2902-X Reserved Limited
1.2



Floorplan



CUSTOMER CONTACT

Notes:

PRINTABLE INFO SHEET

Series: Pennwest Limited

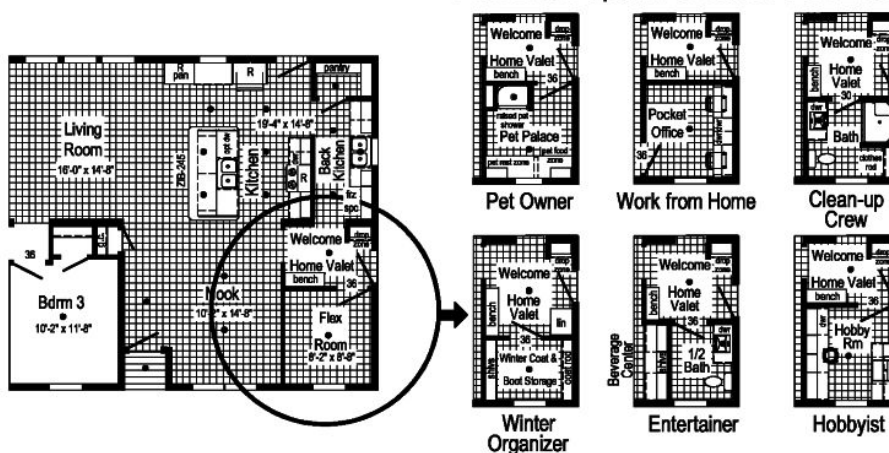
Model: 2P2902-X Reserved Limited

1.2



Floorplan

Flex Room Options to meet YOUR Lifestyle.



This home provides 10 ways to make Life Easier

1. The Back Kitchen - The kitchen is where we entertain so the Back Kitchen is where the counter clutter goes (coffee maker, toaster, blender, etc.). Also cooking prep before and clean up after. Second freezer space allows for freezer or additional refrigerator since we never have enough storage for beverages.
2. Power Pantry - How we shop today is in bulk. Power pantry provides built storage and can reduce the need for kitchen overheads, allowing the kitchen to be more streamlined and contemporary.
3. Welcome Home Valet - Entry into your home should be an inviting event. The Welcome Home Valet says "welcome home it's time to kick back and relax". This area provides a location to store your personal belongings (coat, purse, back-pack, shoes, cell phone, keys, etc.). After a stressful day from work or school no one wants to enter past a stack of dirty laundry.
4. Connected Laundry - Let's put the laundry where it makes the most sense connected to the master closet and close to the secondary bedrooms. Shorten the chores by taking clothes directly from the dryer to the closet or removing the wrinkles from that shirt for an evening event.
5. Pet Palace - A majority of homeowners are also pet owners. The pet palace provides a place for bathing your pet at an elevated height. It also serves as the location for storing pet "stuff", pet bed or crate, pet feeding location or even litter box hide-away.
6. Pocket Office - Busy households need a space everyone can use. Working from home or an area for the kids to do homework the Pocket Office provides a private area to get away and concentrate on the task at hand or do some gaming without distracting others.
7. Clean-Up Crew - Whether your a mechanic, builder, farmer or hard worker that just needs that place to clean up after a busy day of work. Located directly off the side entry the "Clean-up Crew" bath provided a private bath to clean-up prior in entering into the common areas.
8. Winter Organizer - Located directly off the Welcome Home Valet the Winter Organizer is a place for all your winter gear. Hunters have a place to store their camo and the kids have a place for snow gear to dry. Shelves for storing boots, scarves, hats & gloves and a coat rack for coats, snow pants & overalls. Keep everything in one place!
9. Entertainer - For entertaining guests or family convenience the beverage center may serve as a coffee bar, beverage center or for wine storage. It's a serve-self area for everyone.
10. Hobbyist - All hobbies require space! The Hobbyist offers countertop space for creating, cabinets for storing it all away and a sink for rinsing molds, brushes and more.

So how can you get all those features without taking space from your home? Check out the Flex Room Options to meet YOUR Lifestyle.

2P2902-X 3260 Approx. 1846 Sq. Ft.

Reserve Limited 1.2

Builder: Pennwest Homes	Callout: 3260	Revisions: 4/18/22	Scale: 1'-0" = 1'-0"	Date: 3/16/2022	Cust: -	Model/Eng. No.: 2P2902-X
Title: Literature		Drawn By: OY	Reference: 2P2902-X		Dir: -	LIT 2
					Pg: -	

CUSTOMER CONTACT

Notes:

PRINTABLE INFO SHEET

Series: Pennwest Limited

Model: 2P2902-X Reserved Limited

1.2



Standards & Features

INTERIOR

Primed Drywall Throughout
Smooth Flat Ceiling Throughout
8'0" Ceiling Height
25 oz. Carpeting: Bedrooms
Rebond Carpet Pad - 5 lb
Tackstrip Carpet Installation
Foyer Entry with Vinyl Flooring
No-Wax Vinyl Floor Coverings
by Congoleum: Kitchen, Nook, Foyer,
Utility, Great Room,
Recessed LED Lights
-5 Kitchen x 2 Nook-
36" Doors & Where Available
White Painted 6-Panel
Pre-Hung Door with Mortise Hinges
Metal Interior Passage Sets
Smoke Detectors
with Battery Back-Up
Wire Shelving in Guest Closet
White Painted Pine Molding Throughout

BEDROOMS

Ceiling Light
Egress Window in Each Bedroom
Wire Shelving in Closets
Switched 4" Recessed LED Light
in All Walk-In Closets

BATHS

Curved Front Garden Tub in Master
Bath - Where Available
Tub Overflows

BATHS (continued)

China Sinks with Overflows &
Pop-Up Drains
Lighted Vent Fan in Each Bath
LED Lights
Brushed Nickel Metal Faucets
36" High Vanities
Anti-Scald Valves on Showers and Tubs
Linen - Where Available

KITCHEN

Stainless Steel Sink-33x22x8
Brushed Nickel Single Lever Faucet
Power Range Hood with Light
1 USB II Receptacle
CABINETRY
Evermore Custom Cabinetry
(KCMA Certified)
French Country or Barnwood Oak
& 3/4" Overlay Mission Flat Panel Cabinet Doors
Hardwood Oak Cabinet Face Frames
Transitional Cabinet Pulls
(Brushed Nickel or Black)
Hidden Cabinet Hinges
City Scape Cabinet System
Adjustable Shelves in Overhead Cabinets
Drawer-Over-Door Base Cabinets
Soft Close Undermount Drawer Guides
Base and Center Shelves in Base Cabinets
Dovetail Drawer Construction
Laminate Countertops with Laminate Edging
4" Laminate Backsplash

CUSTOMER CONTACT

Notes:

PRINTABLE INFO SHEET

Series: Pennwest Limited

Model: 2P2902-X Reserved Limited

1.2



Standards & Features (continued)

KITCHEN (continued)

Kitchen Island ‐ Where Available

UTILITIES

200 AMP Electrical Service

Plumb and Wire for Washer

Wire for Dryer

Plumb for Dishwasher

Recessed Dryer Vent Box

Programmable Thermostat with 8-Wires

Main Water Line Shut-Off Valve

Water Shut-Off Valves where Accessible

One Exterior Water Faucet

Energy Efficient 90 Plus Gas Furnace

Perimeter Heat boots & registers

INSULATION

R-21 Fiberglass Insulation in Walls

R-38 Batt Insulation in Ceiling

EXTERIOR

5/12 Roof Pitch

Cage Exterior Light at

Front and Rear Door

Two GFI-Protected Exterior Receptacles

Vinyl Ship Lap Siding

O.S.B. Sheathing Under Siding

Wind Wrap Air Infiltration Barrier

12" Eaves and Overhangs

Architectural Shingles

Ridge-vent Roof Ventilation System

Ice Shield

3/0 x 6/8 White 6-Panel Front & Rear

Door with Deadbolt Locks

EXTERIOR (continued)

Vinyl Insulated Argon Filled Windows

with Low-E Glass (no grids)

Lineals on Front Door Side

CONSTRUCTION

2x10 Transverse Floor System on

16" Centers with 23/32" OSB T&G

Floor Decking**

2x6 Exterior Walls on 16" Centers**

2x4 Interior Walls

90 Mile Exposure C Wind Load Design

40# Roof Load Design

-LIMITED-

Omit Basement Stairwell

Superior Bracing

Exterior Water Faucet Extra

Single Bowl Kitchen Sink

50 Gallon Electric Hot Water Heater

Heating Package:

(Furnace, return air

(No trunk lines available) (Gas or Electric)

½ lite Pembroke

Single Full view door

60" Fiberglass Shower

Vinyl Sliding Glass Door

Whole House Ventilation Fan

Flood Light Shipped Loose

Photo Electric Smoke Detector

Photo Electric Smoke Detector with Carbo Monoxide

Phone Jack

Junction Boxes with Conduit

CUSTOMER CONTACT

Notes:

PRINTABLE INFO SHEET

Series: Pennwest Limited

Model: 2P2902-X Reserved Limited

1.2



Standards & Features (continued)

-LIMITED- (continued)

Coastal Shores Siding

5/12 60#, 80# and 100#

7/12 Non-Storage 40#, 60#, 80# and 100#

Wind Zones

Seismic Zones

Tru Spirit Carpet

Floorte Shipped Loose

Omit Carpet

Cabinet Colors

Double Sink in Master

Utility Sink

Pearl Appliance Pkg

(gas or electric)

Labels and Codes

CUSTOMER CONTACT

Notes:
