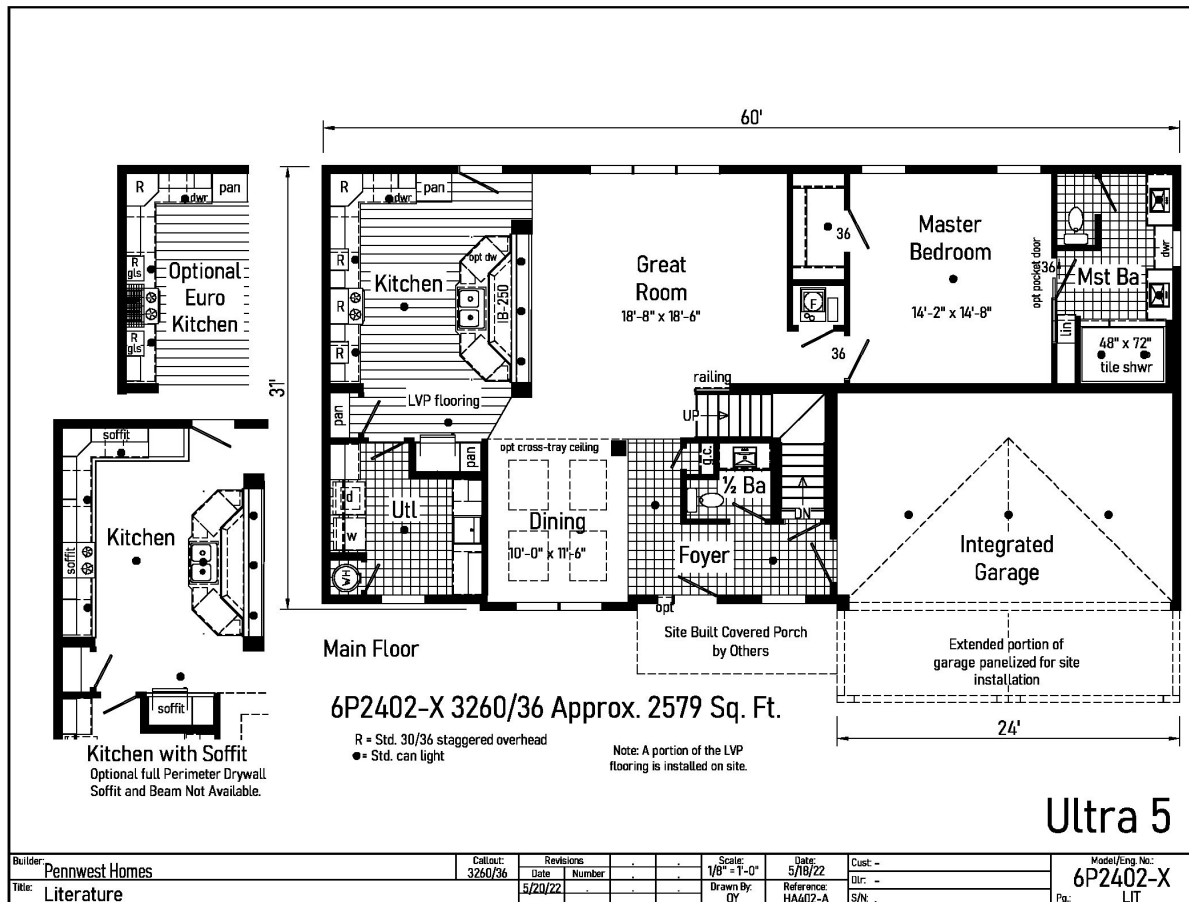


PRINTABLE INFO SHEET

Series: Ultra

Model: 6P2402-X Ultra 5



About This Model

Style: 2-Story / Bedrooms: 3 / Bathrooms: 3 / Square Feet: 2579

CUSTOMER CONTACT

Notes:

PRINTABLE INFO SHEET

Series: Ultra

Model: 6P2402-X Ultra 5



Standards & Features

HOME COMPONENTS

Complete Water Lines Supplied

Complete Electrical

Drain and Gas Lines Stubbed

Through Floor

Complete Heat System

Complete Air Return System

INTERIOR

Primed Drywall Throughout

Smooth Flat Ceiling Throughout

8'0" Ceiling Height

25 oz. Carpeting

Rebond Carpet Pad - 5lb

Tackstrip Carpet Installation

Foyer Entry with Vinyl Flooring

No-Wax Vinyl Floor Coverings

by Congoleum

5 Arm Dining Room Light

(Brushed Nickel or Black)

Recessed LED Lights T/O

36" Doors & Where Available

White Painted 6-Panel Pre-Hung Doors

with Mortise Hinges

Metal Interior Passage Sets

Smoke Detectors with Battery Back-Up

Wire Shelving in Guest Closet

White Painted Pine Moldings

Throughout

KITCHEN

Tip-Out Trays at Sink

Stainless Steel Sink-33x22x8

KITCHEN (continued)

Brushed Nickel Single Lever Faucet

Power Range Hood with Light

30" Deluxe Gas Range

18 Cu. Ft. Frost Free Refrigerator

1 USB II Receptacle

CABINETRY

Evermore Custom Cabinetry

(KCMA Certified)

French Country or Barnwood Oak

¾ Overlay Mission Flat Panel Cabinet Doors

Hardwood Oak Cabinet Face Frames

Transitional Cabinet Pulls

(Brushed Nickel or Black)

Hidden Cabinet Hinges

Choice of Cabinet System

- City Scape 30"/36"

- 36" Cabinets w/ Crouse Crown

- 30" Cabinets w/ Crouse Crown & Soffit

Adjustable Shelves in Overhead Cabinets

Drawer-Over-Door Base Cabinets

Soft Close Undermount Drawer Guides

Base and Center Shelves in Base Cabinets

Dovetail Drawer Construction

Laminate Countertops with Laminate Edging

4" Laminate Backsplash

Kitchen Island & Where Available

BATHS

Curved Front Garden Tub in Master

Bath - Where Available

Tub Overflows

CUSTOMER CONTACT

Notes:

PRINTABLE INFO SHEET

Series: Ultra

Model: 6P2402-X Ultra 5



Standards & Features (continued)

BATHS (continued)

Recessed LED Light over Tub in Master Bath
1.6 Gallon Per Flush Elongated Toilets
China Sinks with Overflows and Pop-Up Drains
Lighted Vent Fan in Each Bath
2-Light Vanity Light Bath 2
Recessed LED Lights over Master Vanity
Brushed Nickel Metal Faucets
36" High Vanities
Anti-Scald Valves on Showers and Tubs
Linen - Where Available

BEDROOMS

Switched Receptcs
Egress Window in Each Bedroom
Wire Shelving in Closets
Switched 4" Recessed LED Light
in All Walk-In Closets

INSULATION

R-21 Fiberglass Insulation in Walls
R-38 Batt Insulation in Ceiling

UTILITIES

200 AMP Electrical Service
Plumb and Wire for Washer
Wire for Dryer
Recessed Dryer Vent Box
Programmable Thermostat with 8-Wires
Main Water Line Shut-Off Valve
Water Shut-Off Valves where Accessible
One Exterior Water Faucet
50 Gallon Electric Water Heater with Pan
Energy Efficient 90 Plus Gas Furnace

UTILITIES (continued)

Perimeter Heat System with Fiberglass
Heat Ducts

EXTERIOR

Cage Exterior Light at Front and Rear Door
Two GFI-Protected Exterior Receptacles
Vinyl Ship Lap Siding
O.S.B. Sheathing Under Siding
Wind Wrap Air Infiltration Barrier
5/12 Pitch Roof with 12" Eaves and
Overhangs
Architectural Shingles
Ridgevent Roof Ventilation System
Ice Shield
3/0 x 6/8 White 6-Panel Front & Rear
Door with Deadbolt Locks
Vinyl Insulated Argon Filled Windows
with Low-E Glass (no grids)
Lineals on Front Door Side

CONSTRUCTION

2x10 Transverse Floor System on
16" Centers with 23/32" OSB T&G
Floor Decking**
2x6 Exterior Walls on 16" Centers**
2x4 Interior Walls
90 Mile Exposure C Wind Load Design
40# Roof Load Design

Ultra Additional Features

*Double Sinks in Master Bath
*4'x6' Ceramic Tile Shower at Master Bath
*Floorte Pro Series 7 Flooring (per print)

CUSTOMER CONTACT

Notes:
