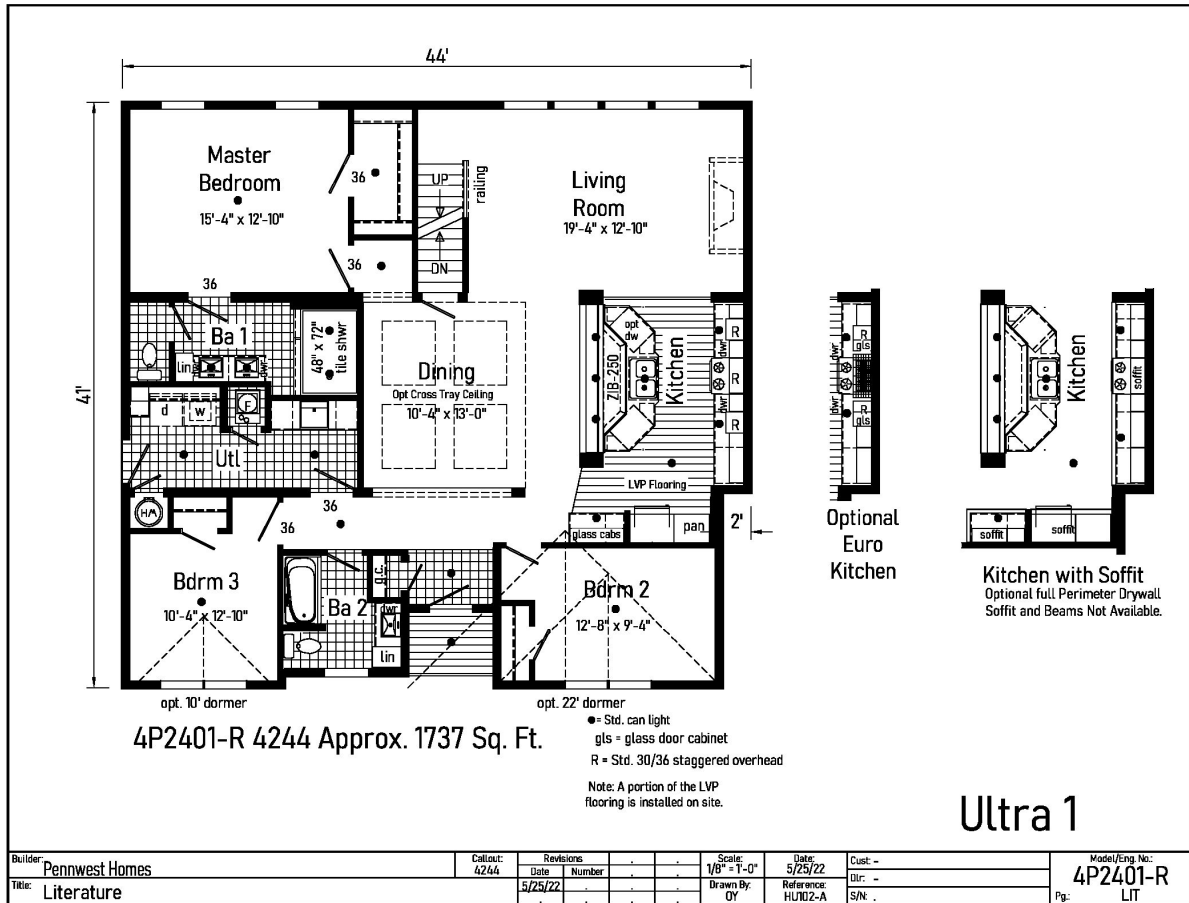


PRINTABLE INFO SHEET

Series: Ultra
 Model: 4P2401-R Ultra 1



About This Model

Style: Ranch / Bedrooms: 3 / Bathrooms: 2 / Square Feet: 1737

CUSTOMER CONTACT

Notes:

PRINTABLE INFO SHEET

Series: Ultra
Model: 4P2401-R Ultra 1



Standards & Features

HOME COMPONENTS

Complete Water Lines Supplied
Complete Electrical
Drain and Gas Lines Stubbed Through Floor
Complete Heat System
Complete Air Return System

INTERIOR

Primed Drywall Throughout
Smooth Flat Ceiling Throughout
8'0" Ceiling Height
25 oz. Carpeting
Rebond Carpet Pad - 5lb
Tackstrip Carpet Installation
Foyer Entry with Vinyl Flooring
No-Wax Vinyl Floor Coverings by Congoleum
5 Arm Dining Room Light (Brushed Nickel or Black)
Recessed LED Lights T/O
36" Doors & Where Available
White Painted 6-Panel Pre-Hung Doors with Mortise Hinges
Metal Interior Passage Sets
Smoke Detectors with Battery Back-Up
Wire Shelving in Guest Closet
White Painted Pine Moldings Throughout

KITCHEN

Tip-Out Trays at Sink
Stainless Steel Sink-33x22x8

KITCHEN (continued)

Brushed Nickel Single Lever Faucet
Power Range Hood with Light
30" Deluxe Gas Range
18 Cu. Ft. Frost Free Refrigerator
1 USB II Receptacle

CABINETS

Evermore Custom Cabinetry (KCMA Certified)
French Country or Barnwood Oak & Overlay Mission Flat Panel Cabinet Doors
Hardwood Oak Cabinet Face Frames
Transitional Cabinet Pulls (Brushed Nickel or Black)
Hidden Cabinet Hinges
Choice of Cabinet System
- City Scape 30"/36"
- 36" Cabinets w/ Crouse Crown
- 30" Cabinets w/ Crouse Crown & Soffit
Adjustable Shelves in Overhead Cabinets
Drawer-Over-Door Base Cabinets
Soft Close Undermount Drawer Guides
Base and Center Shelves in Base Cabinets
Dovetail Drawer Construction
Laminate Countertops with Laminate Edging
4" Laminate Backsplash
Kitchen Island & Where Available

BATHS

Curved Front Garden Tub in Master
Bath - Where Available
Tub Overflows

CUSTOMER CONTACT

Notes:

PRINTABLE INFO SHEET

Series: Ultra

Model: 4P2401-R Ultra 1



Standards & Features (continued)

BATHS (continued)

Recessed LED Light over Tub in Master Bath
1.6 Gallon Per Flush Elongated Toilets
China Sinks with Overflows and Pop-Up Drains
Lighted Vent Fan in Each Bath
2-Light Vanity Light Bath 2
Recessed LED Lights over Master Vanity
Brushed Nickel Metal Faucets
36" High Vanities
Anti-Scald Valves on Showers and Tubs
Linen - Where Available

BEDROOMS

Switched Receptcs
Egress Window in Each Bedroom
Wire Shelving in Closets
Switched 4" Recessed LED Light
in All Walk-In Closets

INSULATION

R-21 Fiberglass Insulation in Walls
R-38 Batt Insulation in Ceiling

UTILITIES

200 AMP Electrical Service
Plumb and Wire for Washer
Wire for Dryer
Recessed Dryer Vent Box
Programmable Thermostat with 8-Wires
Main Water Line Shut-Off Valve
Water Shut-Off Valves where Accessible
One Exterior Water Faucet
50 Gallon Electric Water Heater with Pan
Energy Efficient 90 Plus Gas Furnace

UTILITIES (continued)

Perimeter Heat System with Fiberglass
Heat Ducts

EXTERIOR

Cage Exterior Light at Front and Rear Door
Two GFI-Protected Exterior Receptacles
Vinyl Ship Lap Siding
O.S.B. Sheathing Under Siding
Wind Wrap Air Infiltration Barrier
5/12 Pitch Roof with 12" Eaves and
Overhangs
Architectural Shingles
Ridgevent Roof Ventilation System
Ice Shield
3/0 x 6/8 White 6-Panel Front & Rear
Door with Deadbolt Locks
Vinyl Insulated Argon Filled Windows
with Low-E Glass (no grids)
Lineals on Front Door Side

CONSTRUCTION

2x10 Transverse Floor System on
16" Centers with 23/32" OSB T&G
Floor Decking**
2x6 Exterior Walls on 16" Centers**
2x4 Interior Walls
90 Mile Exposure C Wind Load Design
40# Roof Load Design

Ultra Additional Features

*Double Sinks in Master Bath
*4'x6' Ceramic Tile Shower at Master Bath
*Floorte Pro Series 7 Flooring (per print)

CUSTOMER CONTACT

Notes:
