

## PRINTABLE INFO SHEET

Series: Belle Ame

Model: 2P2703-R Belle Ame 3



## About This Model

Style: Ranch / Bedrooms: 3 / Bathrooms: 2 / Square Feet: 1515

## CUSTOMER CONTACT

Notes:

---

---

---

---

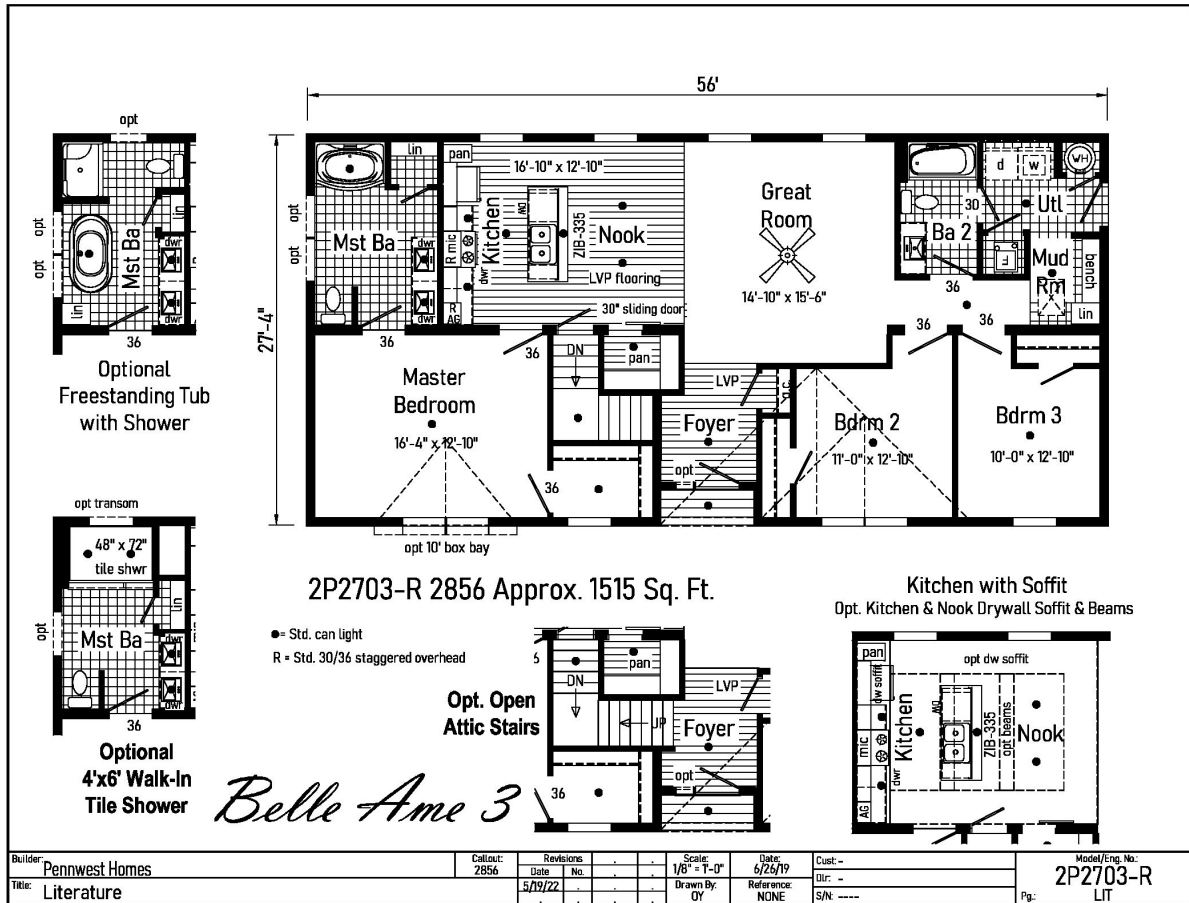
# PRINTABLE INFO SHEET

Series: Belle Ame

Model: 2P2703-R Belle Ame 3



## Floorplan



## CUSTOMER CONTACT

Notes:

---



---



---



---

# PRINTABLE INFO SHEET

**Series: Belle Ame**

**Model: 2P2703-R Belle Ame 3**



## Standards & Features

### HOME COMPONENTS

- Complete Water Lines Supplied
- Complete Electrical
- Drain and Gas Lines Stubbed Through Floor
- Complete Heat System
- Complete Air Return System

### INTERIOR

- Primed Drywall Throughout
- Smooth Flat Ceiling Throughout
- 8'0" Ceiling Height
- 25 oz. Carpeting
- Rebond Carpet Pad - 5lb
- Tackstrip Carpet Installation
- Foyer Entry with Vinyl Flooring
- No-Wax Vinyl Floor Coverings by Congoleum
- 5 Arm Dining Room Light (Brushed Nickel or Black)
- Recessed LED Lights T/O
- 36" Doors & Where Available
- White Painted 6-Panel Pre-Hung Doors with Mortise Hinges
- Metal Interior Passage Sets
- Smoke Detectors with Battery Back-Up
- Wire Shelving in Guest Closet
- White Painted Pine Moldings Throughout

### KITCHEN

- Tip-Out Trays at Sink
- Stainless Steel Sink-33x22x8

### KITCHEN (continued)

- Brushed Nickel Single Lever Faucet
- Power Range Hood with Light
- 30" Deluxe Gas Range
- 18 Cu. Ft. Frost Free Refrigerator
- 1 USB II Receptacle

### CABINETS

- Evermore Custom Cabinetry (KCMA Certified)
- French Country or Barnwood Oak & Overlay Mission Flat Panel Cabinet Doors
- Hardwood Oak Cabinet Face Frames
- Transitional Cabinet Pulls (Brushed Nickel or Black)
- Hidden Cabinet Hinges
- Choice of Cabinet System
  - City Scape 30"/36"
  - 36" Cabinets w/ Crouse Crown
  - 30" Cabinets w/ Crouse Crown & Soffit
- Adjustable Shelves in Overhead Cabinets
- Drawer-Over-Door Base Cabinets
- Soft Close Undermount Drawer Guides
- Base and Center Shelves in Base Cabinets
- Dovetail Drawer Construction
- Laminate Countertops with Laminate Edging
- 4" Laminate Backsplash
- Kitchen Island & Where Available

### BATHS

- Curved Front Garden Tub in Master
- Bath - Where Available
- Tub Overflows

## CUSTOMER CONTACT

Notes:

---

---

---

---

## PRINTABLE INFO SHEET

Series: Belle Ame

Model: 2P2703-R Belle Ame 3



## Standards & Features (continued)

### BATHS (continued)

Recessed LED Light over Tub in Master Bath  
1.6 Gallon Per Flush Elongated Toilets  
China Sinks with Overflows and Pop-Up Drains  
Lighted Vent Fan in Each Bath  
2-Light Vanity Light Bath 2  
Recessed LED Lights over Master Vanity  
Brushed Nickel Metal Faucets  
36" High Vanities  
Anti-Scald Valves on Showers and Tubs  
Linen - Where Available

### BEDROOMS

Switched Receptcs  
Egress Window in Each Bedroom  
Wire Shelving in Closets  
Switched 4" Recessed LED Light  
in All Walk-In Closets

### INSULATION

R-21 Fiberglass Insulation in Walls  
R-38 Batt Insulation in Ceiling

### UTILITIES

200 AMP Electrical Service  
Plumb and Wire for Washer  
Wire for Dryer  
Recessed Dryer Vent Box  
Programmable Thermostat with 8-Wires  
Main Water Line Shut-Off Valve  
Water Shut-Off Valves where Accessible  
One Exterior Water Faucet  
50 Gallon Electric Water Heater with Pan  
Energy Efficient 90 Plus Gas Furnace

### UTILITIES (continued)

Perimeter Heat System with Fiberglass  
Heat Ducts

### EXTERIOR

Cage Exterior Light at Front and Rear Door  
Two GFI-Protected Exterior Receptacles  
Vinyl Ship Lap Siding  
O.S.B. Sheathing Under Siding  
Wind Wrap Air Infiltration Barrier  
5/12 Pitch Roof with 12" Eaves and  
Overhangs  
Architectural Shingles  
Ridgevent Roof Ventilation System  
Ice Shield  
3/0 x 6/8 White 6-Panel Front & Rear  
Door with Deadbolt Locks  
Vinyl Insulated Argon Filled Windows  
with Low-E Glass (no grids)  
Lineals on Front Door Side

### CONSTRUCTION

2x10 Transverse Floor System on  
16" Centers with 23/32" OSB T&G  
Floor Decking\*\*  
2x6 Exterior Walls on 16" Centers\*\*  
2x4 Interior Walls  
90 Mile Exposure C Wind Load Design  
40# Roof Load Design

### Belle Ame Additional Features

\* (4) 72" Windows  
\*Choice Cabinet Finish  
\*Full Ceramic Backsplash in Kitchen

## CUSTOMER CONTACT

Notes:

---

---

---

---

## PRINTABLE INFO SHEET

Series: Belle Ame

Model: 2P2703-R Belle Ame 3



## Standards & Features (continued)

### Belle Ame Additional Features (continued)

- \*Gooseneck Kitchen Faucet
- \*Double Lavs in Master Bath
- \*Ceiling Fan
- \*Over the Range Microwave Oven
- \*Pearl Appliance Package Stainless Steel
- Side By Side Refrigerator, Self Clean Range and 4 Cycle Dishwasher
- \*Sliding Barn Door at Pantry
- \*Floorte Pro Series 7 (Kitchen, Nook & Foyer)

## CUSTOMER CONTACT

Notes:

---

---

---

---