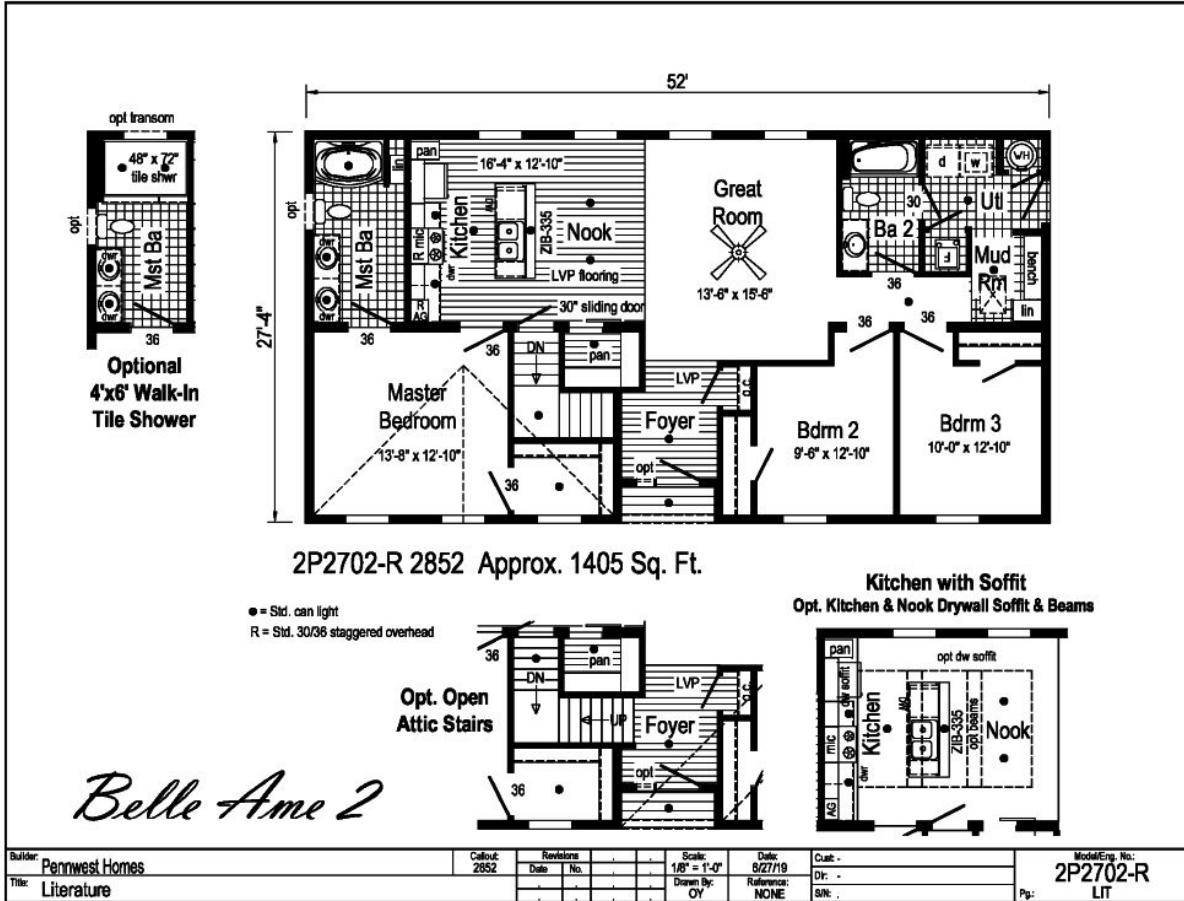


PRINTABLE INFO SHEET

Series: Belle Ame

Model: 2P2702-R Belle Ame 2



About This Model

Style: Ranch / Bedrooms: 3 / Bathrooms: 2 / Square Feet: 1405

CUSTOMER CONTACT

Notes:

PRINTABLE INFO SHEET

Series: Belle Ame

Model: 2P2702-R Belle Ame 2



Standards & Features

HOME COMPONENTS

- Complete Water Lines Supplied
- Complete Electrical
- Drain and Gas Lines Stubbed Through Floor
- Complete Heat System
- Complete Air Return System

INTERIOR

- Primed Drywall Throughout
- Smooth Flat Ceiling Throughout
- 8'0" Ceiling Height
- 25 oz. Carpeting
- Rebond Carpet Pad - 5lb
- Tackstrip Carpet Installation
- Foyer Entry with Vinyl Flooring
- No-Wax Vinyl Floor Coverings by Congoleum
- 5 Arm Dining Room Light (Brushed Nickel or Black)
- Recessed LED Lights T/O
- 36" Doors & Where Available
- White Painted 6-Panel Pre-Hung Doors with Mortise Hinges
- Metal Interior Passage Sets
- Smoke Detectors with Battery Back-Up
- Wire Shelving in Guest Closet
- White Painted Pine Moldings Throughout

KITCHEN

- Tip-Out Trays at Sink
- Stainless Steel Sink-33x22x8

KITCHEN (continued)

- Brushed Nickel Single Lever Faucet
- Power Range Hood with Light
- 30" Deluxe Gas Range
- 18 Cu. Ft. Frost Free Refrigerator
- 1 USB II Receptacle

CABINETRY

- Evermore Custom Cabinetry (KCMA Certified)
- French Country or Barnwood Oak & Overlay Mission Flat Panel Cabinet Doors
- Hardwood Oak Cabinet Face Frames
- Transitional Cabinet Pulls (Brushed Nickel or Black)
- Hidden Cabinet Hinges
- Choice of Cabinet System
 - City Scape 30"/36"
 - 36" Cabinets w/ Crouse Crown
 - 30" Cabinets w/ Crouse Crown & Soffit
- Adjustable Shelves in Overhead Cabinets
- Drawer-Over-Door Base Cabinets
- Soft Close Undermount Drawer Guides
- Base and Center Shelves in Base Cabinets
- Dovetail Drawer Construction
- Laminate Countertops with Laminate Edging
- 4" Laminate Backsplash
- Kitchen Island & Where Available

BATHS

- Curved Front Garden Tub in Master
- Bath - Where Available
- Tub Overflows

CUSTOMER CONTACT

Notes:

PRINTABLE INFO SHEET

Series: Belle Ame

Model: 2P2702-R Belle Ame 2



Standards & Features (continued)

BATHS (continued)

- Recessed LED Light over Tub in Master Bath
- 1.6 Gallon Per Flush Elongated Toilets
- China Sinks with Overflows and Pop-Up Drains
- Lighted Vent Fan in Each Bath
- 2-Light Vanity Light Bath 2
- Recessed LED Lights over Master Vanity
- Brushed Nickel Metal Faucets
- 36" High Vanities
- Anti-Scald Valves on Showers and Tubs
- Linen - Where Available

BEDROOMS

- Switched Receptcs
- Egress Window in Each Bedroom
- Wire Shelving in Closets
- Switched 4" Recessed LED Light in All Walk-In Closets

INSULATION

- R-21 Fiberglass Insulation in Walls
- R-38 Batt Insulation in Ceiling

UTILITIES

- 200 AMP Electrical Service
- Plumb and Wire for Washer
- Wire for Dryer
- Recessed Dryer Vent Box
- Programmable Thermostat with 8-Wires
- Main Water Line Shut-Off Valve
- Water Shut-Off Valves where Accessible
- One Exterior Water Faucet
- 50 Gallon Electric Water Heater with Pan
- Energy Efficient 90 Plus Gas Furnace

UTILITIES (continued)

- Perimeter Heat System with Fiberglass Heat Ducts

EXTERIOR

- Cage Exterior Light at Front and Rear Door
- Two GFI-Protected Exterior Receptacles
- Vinyl Ship Lap Siding
- O.S.B. Sheathing Under Siding
- Wind Wrap Air Infiltration Barrier
- 5/12 Pitch Roof with 12" Eaves and Overhangs
- Architectural Shingles
- Ridgevent Roof Ventilation System
- Ice Shield
- 3/0 x 6/8 White 6-Panel Front & Rear Door with Deadbolt Locks
- Vinyl Insulated Argon Filled Windows with Low-E Glass (no grids)
- Lineals on Front Door Side

CONSTRUCTION

- 2x10 Transverse Floor System on 16" Centers with 23/32" OSB T&G Floor Decking**
- 2x6 Exterior Walls on 16" Centers**
- 2x4 Interior Walls
- 90 Mile Exposure C Wind Load Design
- 40# Roof Load Design

Belle Ame Additional Features

- * (4) 72" Windows
- *Choice Cabinet Finish
- *Full Ceramic Backsplash in Kitchen

CUSTOMER CONTACT

Notes:

PRINTABLE INFO SHEET

Series: Belle Ame

Model: 2P2702-R Belle Ame 2



Standards & Features (continued)

Belle Ame Additional Features (continued)

- *Gooseneck Kitchen Faucet
- *Double Lavs in Master Bath
- *Ceiling Fan
- *Over the Range Microwave Oven
- *Pearl Appliance Package Stainless Steel
- Side By Side Refrigerator, Self Clean Range and 4 Cycle Dishwasher
- *Sliding Barn Door at Pantry
- *Floorte Pro Series 7 (Kitchen, Nook & Foyer)

CUSTOMER CONTACT

Notes:
