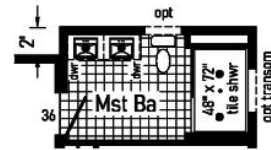
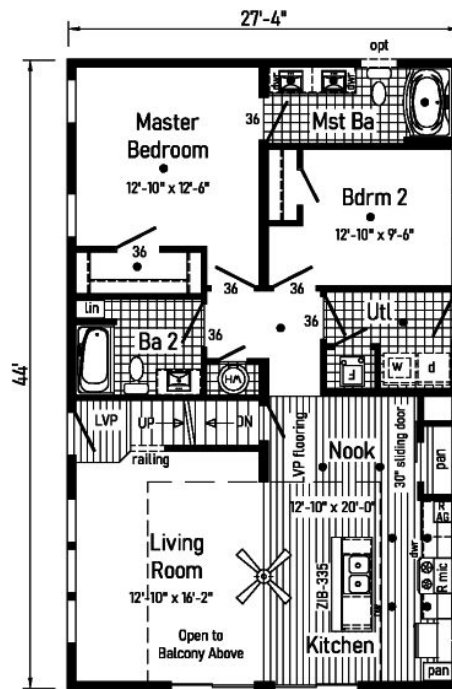


## PRINTABLE INFO SHEET

Series: Belle Ame

Model: 2PC2702-R Belle Ame 8



Optional  
4'x6' Walk-in  
Tile Shower

• Std. can light  
R = Std. 30/36 staggered overhead

2PC2702-R 2844 Approx. 1203 Sq. Ft.

*Belle Ame 8*

Builder: Pennwest Homes	Callout: 2844	Revisions:	Scale: 1/8" = 1'-0"	Date: 6/28/24	Cost: -	Model/Eng. No.: 2PC2702-R
Title: Literature		Date: No.	Drawn By: DY	Reference: NONE	Dir: -	LIT
				S/N: -		

## About This Model

Style: Cape / Bedrooms: 2 / Bathrooms: 2 / Square Feet: 1203

## CUSTOMER CONTACT

Notes:

---



---



---



---

## PRINTABLE INFO SHEET

**Series: Belle Ame**

**Model: 2PC2702-R Belle Ame 8**



## Standards & Features

### HOME COMPONENTS

Complete Water Lines Supplied

Complete Electrical

Drain and Gas Lines Stubbed

Through Floor

Complete Heat System

Complete Air Return System

### INTERIOR

Primed Drywall Throughout

Smooth Flat Ceiling Throughout

8'0" Ceiling Height

25 oz. Carpeting

Rebond Carpet Pad - 5lb

Tackstrip Carpet Installation

Foyer Entry with Vinyl Flooring

No-Wax Vinyl Floor Coverings

by Congoleum

5 Arm Dining Room Light

(Brushed Nickel or Black)

Recessed LED Lights T/O

36" Doors & Where Available

White Painted 6-Panel Pre-Hung Doors  
with Mortise Hinges

Metal Interior Passage Sets

Smoke Detectors with Battery Back-Up

Wire Shelving in Guest Closet

White Painted Pine Moldings

Throughout

### KITCHEN

Tip-Out Trays at Sink

Stainless Steel Sink-33x22x8

### KITCHEN (continued)

Brushed Nickel Single Lever Faucet

Power Range Hood with Light

30" Deluxe Gas Range

18 Cu. Ft. Frost Free Refrigerator

1 USB II Receptacle

### CABINETRY

Evermore Custom Cabinetry

(KCMA Certified)

French Country or Barnwood Oak

&frac34; Overlay Mission Flat Panel Cabinet Doors

Hardwood Oak Cabinet Face Frames

Transitional Cabinet Pulls

(Brushed Nickel or Black)

Hidden Cabinet Hinges

Choice of Cabinet System

- City Scape 30"/36"

- 36" Cabinets w/ Crouse Crown

- 30" Cabinets w/ Crouse Crown & Soffit

Adjustable Shelves in Overhead Cabinets

Drawer-Over-Door Base Cabinets

Soft Close Undermount Drawer Guides

Base and Center Shelves in Base Cabinets

Dovetail Drawer Construction

Laminate Countertops with Laminate Edging

4" Laminate Backsplash

Kitchen Island & Where Available

### BATHS

Curved Front Garden Tub in Master

Bath - Where Available

Tub Overflows

## CUSTOMER CONTACT

Notes:

---

---

---

---

## PRINTABLE INFO SHEET

**Series: Belle Ame**

**Model: 2PC2702-R Belle Ame 8**



## Standards & Features (continued)

### BATHS (continued)

Recessed LED Light over Tub in Master Bath  
1.6 Gallon Per Flush Elongated Toilets  
China Sinks with Overflows and Pop-Up Drains  
Lighted Vent Fan in Each Bath  
2-Light Vanity Light Bath 2  
Recessed LED Lights over Master Vanity  
Brushed Nickel Metal Faucets  
36" High Vanities  
Anti-Scald Valves on Showers and Tubs  
Linen - Where Available

### BEDROOMS

Switched Receptcs  
Egress Window in Each Bedroom  
Wire Shelving in Closets  
Switched 4" Recessed LED Light  
in All Walk-In Closets

### INSULATION

R-21 Fiberglass Insulation in Walls  
R-38 Batt Insulation in Ceiling

### UTILITIES

200 AMP Electrical Service  
Plumb and Wire for Washer  
Wire for Dryer  
Recessed Dryer Vent Box  
Programmable Thermostat with 8-Wires  
Main Water Line Shut-Off Valve  
Water Shut-Off Valves where Accessible  
One Exterior Water Faucet  
50 Gallon Electric Water Heater with Pan  
Energy Efficient 90 Plus Gas Furnace

### UTILITIES (continued)

Perimeter Heat System with Fiberglass  
Heat Ducts

### EXTERIOR

Cage Exterior Light at Front and Rear Door  
Two GFI-Protected Exterior Receptacles  
Vinyl Ship Lap Siding  
O.S.B. Sheathing Under Siding  
Wind Wrap Air Infiltration Barrier  
5/12 Pitch Roof with 12" Eaves and  
Overhangs  
Architectural Shingles  
Ridgevent Roof Ventilation System  
Ice Shield  
3/0 x 6/8 White 6-Panel Front & Rear  
Door with Deadbolt Locks  
Vinyl Insulated Argon Filled Windows  
with Low-E Glass (no grids)  
Lineals on Front Door Side

### CONSTRUCTION

2x10 Transverse Floor System on  
16" Centers with 23/32" OSB T&G  
Floor Decking\*\*  
2x6 Exterior Walls on 16" Centers\*\*  
2x4 Interior Walls  
90 Mile Exposure C Wind Load Design  
40# Roof Load Design

### Belle Ame Additional Features

\* (4) 72" Windows

\*Choice Cabinet Finish

\*Full Ceramic Backsplash in Kitchen

## CUSTOMER CONTACT

Notes:

---

---

---

---

## PRINTABLE INFO SHEET

**Series: Belle Ame**

**Model: 2PC2702-R Belle Ame 8**



## Standards & Features (continued)

### Belle Ame Additional Features (continued)

- \*Gooseneck Kitchen Faucet
- \*Double Lavs in Master Bath
- \*Ceiling Fan
- \*Over the Range Microwave Oven
- \*Pearl Appliance Package Stainless Steel
- Side By Side Refrigerator, Self Clean Range and 4 Cycle Dishwasher
- \*Sliding Barn Door at Pantry
- \*Floorte Pro Series 7 (Kitchen, Nook & Foyer)

## CUSTOMER CONTACT

Notes:

---

---

---

---