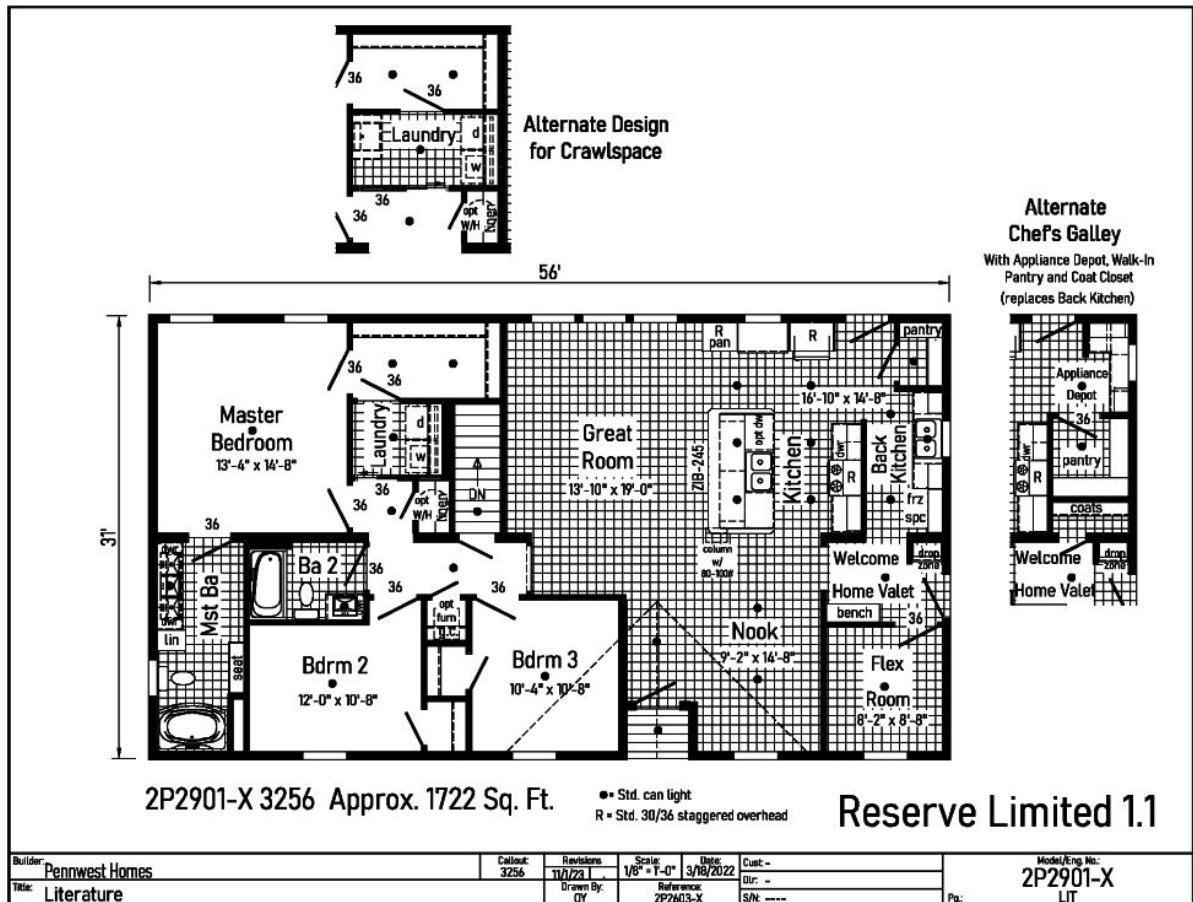


## PRINTABLE INFO SHEET

Series: Pennwest Limited

Model: 2P2901-X Reserved Limited

1.1



## About This Model

Style: Modular / Bedrooms: 3 / Bathrooms: 2 / Square Feet: 1722

## CUSTOMER CONTACT

Notes:

## PRINTABLE INFO SHEET

**Series: Pennwest Limited**

**Model: 2P2901-X Reserved Limited**

**1.1**



## Standards & Features

### INTERIOR

Primed Drywall Throughout  
Smooth Flat Ceiling Throughout  
8'0" Ceiling Height  
25 oz. Carpeting: Bedrooms  
Rebond Carpet Pad - 5 lb  
Tackstrip Carpet Installation  
Foyer Entry with Vinyl Flooring  
No-Wax Vinyl Floor Coverings  
by Congoleum: Kitchen, Nook, Foyer,  
Utility, Great Room,  
Recessed LED Lights  
-5 Kitchen x 2 Nook-  
36" Doors & Where Available  
White Painted 6-Panel  
Pre-Hung Door with Mortise Hinges  
Metal Interior Passage Sets  
Smoke Detectors  
with Battery Back-Up  
Wire Shelving in Guest Closet  
White Painted Pine Molding Throughout

### BEDROOMS

Ceiling Light  
Egress Window in Each Bedroom  
Wire Shelving in Closets  
Switched 4" Recessed LED Light  
in All Walk-In Closets

### BATHS

Curved Front Garden Tub in Master  
Bath - Where Available  
Tub Overflows

### BATHS (continued)

China Sinks with Overflows &  
Pop-Up Drains  
Lighted Vent Fan in Each Bath  
LED Lights  
Brushed Nickel Metal Faucets  
36" High Vanities  
Anti-Scald Valves on Showers and Tubs  
Linen - Where Available

### KITCHEN

Stainless Steel Sink-33x22x8  
Brushed Nickel Single Lever Faucet  
Power Range Hood with Light  
1 USB II Receptacle  
CABINETRY  
Evermore Custom Cabinetry  
(KCMA Certified)  
French Country or Barnwood Oak  
& Overlay Mission Flat Panel Cabinet Doors  
Hardwood Oak Cabinet Face Frames  
Transitional Cabinet Pulls  
(Brushed Nickel or Black)  
Hidden Cabinet Hinges  
City Scape Cabinet System  
Adjustable Shelves in Overhead Cabinets  
Drawer-Over-Door Base Cabinets  
Soft Close Undermount Drawer Guides  
Base and Center Shelves in Base Cabinets  
Dovetail Drawer Construction  
Laminate Countertops with Laminate Edging  
4" Laminate Backsplash

## CUSTOMER CONTACT

Notes:

---

---

---

---

## PRINTABLE INFO SHEET

Series: Pennwest Limited

Model: 2P2901-X Reserved Limited

1.1



## Standards & Features (continued)

### KITCHEN (continued)

Kitchen Island &dash; Where Available

### UTILITIES

200 AMP Electrical Service

Plumb and Wire for Washer

Wire for Dryer

Plumb for Dishwasher

Recessed Dryer Vent Box

Programmable Thermostat with 8-Wires

Main Water Line Shut-Off Valve

Water Shut-Off Valves where Accessible

One Exterior Water Faucet

Energy Efficient 90 Plus Gas Furnace

Perimeter Heat boots & registers

### INSULATION

R-21 Fiberglass Insulation in Walls

R-38 Batt Insulation in Ceiling

### EXTERIOR

5/12 Roof Pitch

Cage Exterior Light at

Front and Rear Door

Two GFI-Protected Exterior Receptacles

Vinyl Ship Lap Siding

O.S.B. Sheathing Under Siding

Wind Wrap Air Infiltration Barrier

12" Eaves and Overhangs

Architectural Shingles

Ridge-vent Roof Ventilation System

Ice Shield

3/0 x 6/8 White 6-Panel Front & Rear

Door with Deadbolt Locks

### EXTERIOR (continued)

Vinyl Insulated Argon Filled Windows

with Low-E Glass (no grids)

Lineals on Front Door Side

### CONSTRUCTION

2x10 Transverse Floor System on

16" Centers with 23/32" OSB T&G

Floor Decking\*\*

2x6 Exterior Walls on 16" Centers\*\*

2x4 Interior Walls

90 Mile Exposure C Wind Load Design

40# Roof Load Design

### -LIMITED-

Omit Basement Stairwell

Superior Bracing

Exterior Water Faucet Extra

Single Bowl Kitchen Sink

50 Gallon Electric Hot Water Heater

Heating Package:

(Furnace, return air

(No trunk lines available) (Gas or Electric)

&frac12; lite Pembroke

Single Full view door

60" Fiberglass Shower

Vinyl Sliding Glass Door

Whole House Ventilation Fan

Flood Light Shipped Loose

Photo Electric Smoke Detector

Photo Electric Smoke Detector with Carbo Monoxide

Phone Jack

Junction Boxes with Conduit

## CUSTOMER CONTACT

Notes:

---

---

---

---

## PRINTABLE INFO SHEET

Series: Pennwest Limited

Model: 2P2901-X Reserved Limited

1.1



## Standards & Features (continued)

### -LIMITED- (continued)

Coastal Shores Siding

5/12 60#, 80# and 100#

7/12 Non-Storage 40#, 60#, 80# and 100#

Wind Zones

Seismic Zones

Tru Spirit Carpet

Floorte Shipped Loose

Omit Carpet

Cabinet Colors

Double Sink in Master

Utility Sink

Pearl Appliance Pkg

(gas or electric)

Labels and Codes

## CUSTOMER CONTACT

Notes:

---

---

---

---