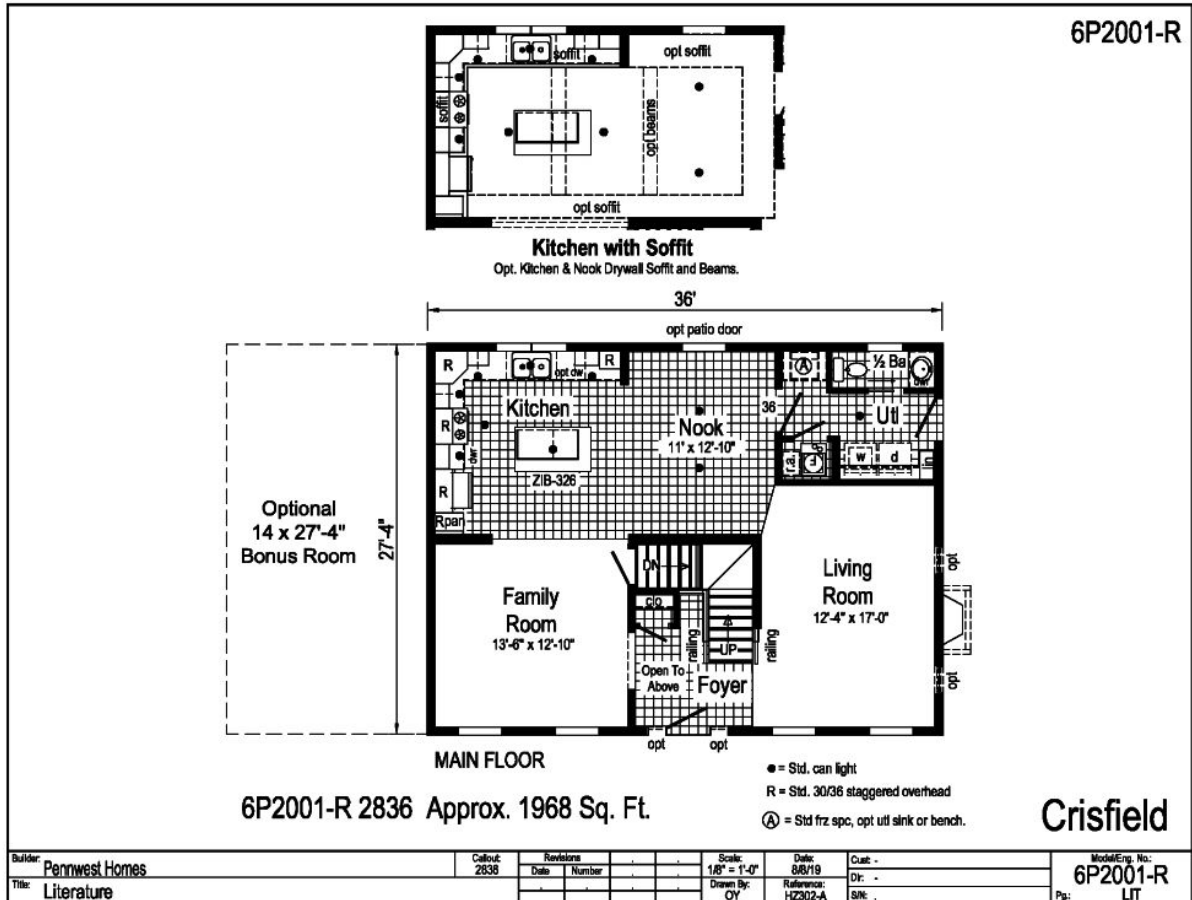


## PRINTABLE INFO SHEET

Series: Pennwest Reserve 2-Story

Model: 6P2001-R Crisfield



## About This Model

Style: 2-Story / Bedrooms: 3 / Bathrooms: 3 / Square Feet: 1968

## CUSTOMER CONTACT

Notes:

---



---



---



---

## PRINTABLE INFO SHEET

**Series: Pennwest Reserve 2-Story**  
**Model: 6P2001-R Crisfield**



## Standards & Features

### HOME COMPONENTS

Complete Water Lines Supplied  
Complete Electrical  
Drain and Gas Lines Stubbed  
Through Floor  
Complete Heat System  
Complete Air Return System

### INTERIOR

Primed Drywall Throughout  
Smooth Flat Ceiling Throughout  
8'0" Ceiling Height  
25 oz. Carpeting  
Rebond Carpet Pad - 5lb  
Tackstrip Carpet Installation  
Foyer Entry with Vinyl Flooring  
No-Wax Vinyl Floor Coverings  
by Congoleum  
5 Arm Dining Room Light  
(Brushed Nickel or Black)  
Recessed LED Lights T/O  
36" Doors & Where Available  
White Painted 6-Panel Pre-Hung Doors  
with Mortise Hinges  
Metal Interior Passage Sets  
Smoke Detectors with Battery Back-Up  
Wire Shelving in Guest Closet  
White Painted Pine Moldings  
Throughout

### KITCHEN

Tip-Out Trays at Sink  
Stainless Steel Sink-33x22x8

### KITCHEN (continued)

Brushed Nickel Single Lever Faucet  
Power Range Hood with Light  
30" Deluxe Gas Range  
18 Cu. Ft. Frost Free Refrigerator  
1 USB II Receptacle

### CABINETRY

Evermore Custom Cabinetry  
(KCMA Certified)  
French Country or Barnwood Oak  
& 3/4" Overlay Mission Flat Panel Cabinet Doors  
Hardwood Oak Cabinet Face Frames  
Transitional Cabinet Pulls  
(Brushed Nickel or Black)  
Hidden Cabinet Hinges  
Choice of Cabinet System  
- City Scape 30"/36"  
- 36" Cabinets w/ Crouse Crown  
- 30" Cabinets w/ Crouse Crown & Soffit  
Adjustable Shelves in Overhead Cabinets  
Drawer-Over-Door Base Cabinets  
Soft Close Undermount Drawer Guides  
Base and Center Shelves in Base Cabinets  
Dovetail Drawer Construction  
Laminate Countertops with Laminate Edging  
4" Laminate Backsplash  
Kitchen Island & Where Available

### BATHS

Curved Front Garden Tub in Master  
Bath - Where Available  
Tub Overflows

## CUSTOMER CONTACT

Notes:

---

---

---

---

## PRINTABLE INFO SHEET

**Series: Pennwest Reserve 2-Story**  
**Model: 6P2001-R Crisfield**



## Standards & Features (continued)

### BATHS (continued)

Recessed LED Light over Tub in Master Bath  
1.6 Gallon Per Flush Elongated Toilets  
China Sinks with Overflows and Pop-Up Drains  
Lighted Vent Fan in Each Bath  
2-Light Vanity Light Bath 2  
Recessed LED Lights over Master Vanity  
Brushed Nickel Metal Faucets  
36" High Vanities  
Anti-Scald Valves on Showers and Tubs  
Linen - Where Available

### BEDROOMS

Switched Receptps  
Egress Window in Each Bedroom  
Wire Shelving in Closets  
Switched 4" Recessed LED Light  
in All Walk-In Closets

### INSULATION

R-21 Fiberglass Insulation in Walls  
R-38 Batt Insulation in Ceiling

### UTILITIES

200 AMP Electrical Service  
Plumb and Wire for Washer  
Wire for Dryer  
Recessed Dryer Vent Box  
Programmable Thermostat with 8-Wires  
Main Water Line Shut-Off Valve  
Water Shut-Off Valves where Accessible  
One Exterior Water Faucet  
50 Gallon Electric Water Heater with Pan  
Energy Efficient 90 Plus Gas Furnace

### UTILITIES (continued)

Perimeter Heat System with Fiberglass  
Heat Ducts

### EXTERIOR

Cage Exterior Light at Front and Rear Door  
Two GFI-Protected Exterior Receptacles  
Vinyl Ship Lap Siding  
O.S.B. Sheathing Under Siding  
Wind Wrap Air Infiltration Barrier  
5/12 Pitch Roof with 12" Eaves and  
Overhangs  
Architectural Shingles  
Ridgevent Roof Ventilation System  
Ice Shield  
3/0 x 6/8 White 6-Panel Front & Rear  
Door with Deadbolt Locks  
Vinyl Insulated Argon Filled Windows  
with Low-E Glass (no grids)  
Lineals on Front Door Side

### CONSTRUCTION

2x10 Transverse Floor System on  
16" Centers with 23/32" OSB T&G  
Floor Decking\*\*  
2x6 Exterior Walls on 16" Centers\*\*  
2x4 Interior Walls  
90 Mile Exposure C Wind Load Design  
40# Roof Load Design

## CUSTOMER CONTACT

Notes:

---

---

---

---