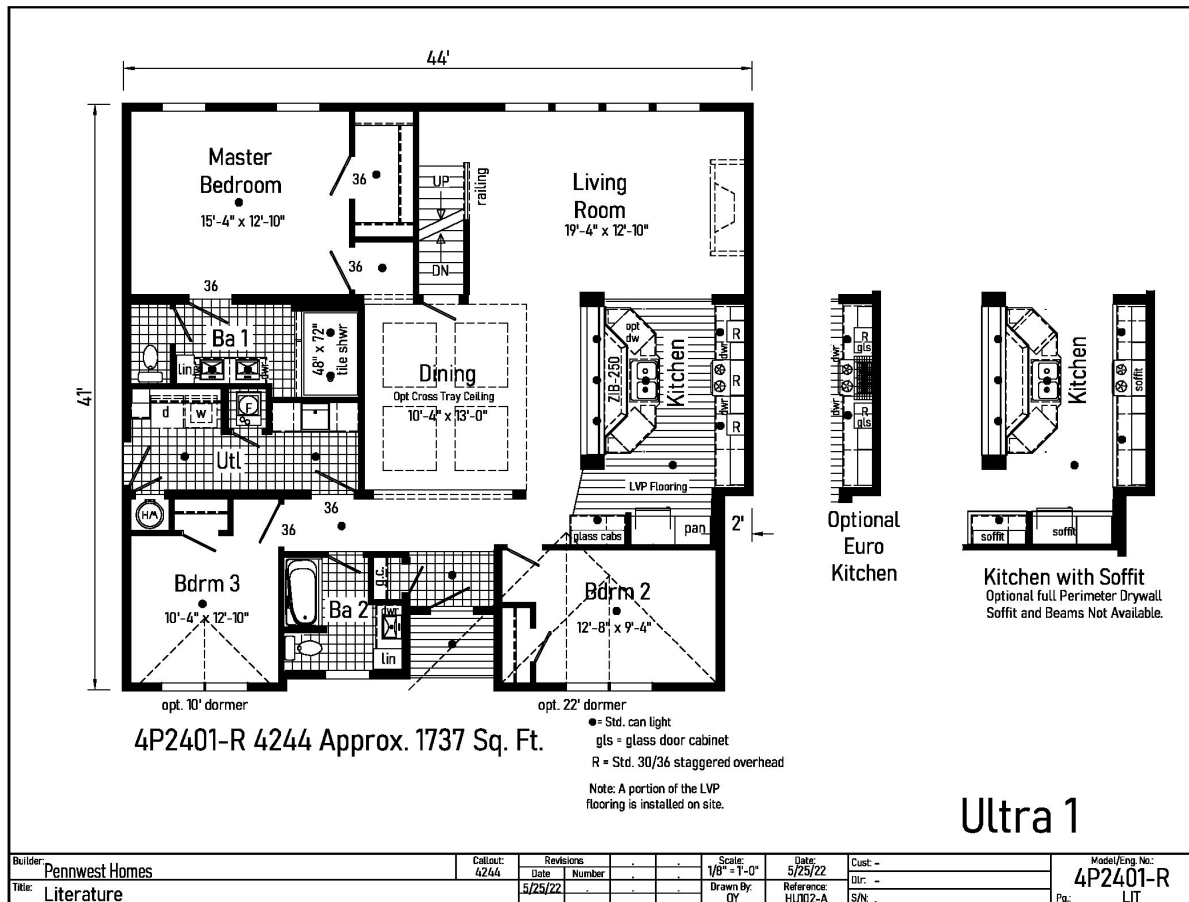


## PRINTABLE INFO SHEET

Series: Ultra

Model: 4P2401-R Ultra 1



## About This Model

Style: Ranch / Bedrooms: 3 / Bathrooms: 2 / Square Feet: 1737

## CUSTOMER CONTACT

Notes:

---



---



---



---

## PRINTABLE INFO SHEET

**Series: Ultra**

**Model: 4P2401-R Ultra 1**



## Standards & Features

### HOME COMPONENTS

Complete Water Lines Supplied

Complete Electrical

Drain and Gas Lines Stubbed

Through Floor

Complete Heat System

Complete Air Return System

### INTERIOR

Primed Drywall Throughout

Smooth Flat Ceiling Throughout

8'0" Ceiling Height

25 oz. Carpeting

Rebond Carpet Pad - 5lb

Tackstrip Carpet Installation

Foyer Entry with Vinyl Flooring

No-Wax Vinyl Floor Coverings

by Congoleum

5 Arm Dining Room Light

(Brushed Nickel or Black)

Recessed LED Lights T/O

36" Doors & Where Available

White Painted 6-Panel Pre-Hung Doors  
with Mortise Hinges

Metal Interior Passage Sets

Smoke Detectors with Battery Back-Up

Wire Shelving in Guest Closet

White Painted Pine Moldings

Throughout

### KITCHEN

Tip-Out Trays at Sink

Stainless Steel Sink-33x22x8

### KITCHEN (continued)

Brushed Nickel Single Lever Faucet

Power Range Hood with Light

30" Deluxe Gas Range

18 Cu. Ft. Frost Free Refrigerator

1 USB II Receptacle

### CABINETRY

Evermore Custom Cabinetry

(KCMA Certified)

French Country or Barnwood Oak

&frac34; Overlay Mission Flat Panel Cabinet Doors

Hardwood Oak Cabinet Face Frames

Transitional Cabinet Pulls

(Brushed Nickel or Black)

Hidden Cabinet Hinges

Choice of Cabinet System

- City Scape 30"/36"

- 36" Cabinets w/ Crouse Crown

- 30" Cabinets w/ Crouse Crown & Soffit

Adjustable Shelves in Overhead Cabinets

Drawer-Over-Door Base Cabinets

Soft Close Undermount Drawer Guides

Base and Center Shelves in Base Cabinets

Dovetail Drawer Construction

Laminate Countertops with Laminate Edging

4" Laminate Backsplash

Kitchen Island & Where Available

### BATHS

Curved Front Garden Tub in Master

Bath - Where Available

Tub Overflows

## CUSTOMER CONTACT

Notes:

---

---

---

---

## PRINTABLE INFO SHEET

**Series: Ultra**

**Model: 4P2401-R Ultra 1**



## Standards & Features (continued)

### BATHS (continued)

Recessed LED Light over Tub in Master Bath  
1.6 Gallon Per Flush Elongated Toilets  
China Sinks with Overflows and Pop-Up Drains  
Lighted Vent Fan in Each Bath  
2-Light Vanity Light Bath 2  
Recessed LED Lights over Master Vanity  
Brushed Nickel Metal Faucets  
36" High Vanities  
Anti-Scald Valves on Showers and Tubs  
Linen - Where Available

### BEDROOMS

Switched Receptcs  
Egress Window in Each Bedroom  
Wire Shelving in Closets  
Switched 4" Recessed LED Light  
in All Walk-In Closets

### INSULATION

R-21 Fiberglass Insulation in Walls  
R-38 Batt Insulation in Ceiling

### UTILITIES

200 AMP Electrical Service  
Plumb and Wire for Washer  
Wire for Dryer  
Recessed Dryer Vent Box  
Programmable Thermostat with 8-Wires  
Main Water Line Shut-Off Valve  
Water Shut-Off Valves where Accessible  
One Exterior Water Faucet  
50 Gallon Electric Water Heater with Pan  
Energy Efficient 90 Plus Gas Furnace

### UTILITIES (continued)

Perimeter Heat System with Fiberglass  
Heat Ducts

### EXTERIOR

Cage Exterior Light at Front and Rear Door  
Two GFI-Protected Exterior Receptacles  
Vinyl Ship Lap Siding  
O.S.B. Sheathing Under Siding  
Wind Wrap Air Infiltration Barrier  
5/12 Pitch Roof with 12" Eaves and  
Overhangs  
Architectural Shingles  
Ridgevent Roof Ventilation System  
Ice Shield  
3/0 x 6/8 White 6-Panel Front & Rear  
Door with Deadbolt Locks  
Vinyl Insulated Argon Filled Windows  
with Low-E Glass (no grids)  
Lineals on Front Door Side

### CONSTRUCTION

2x10 Transverse Floor System on  
16" Centers with 23/32" OSB T&G  
Floor Decking\*\*  
2x6 Exterior Walls on 16" Centers\*\*  
2x4 Interior Walls  
90 Mile Exposure C Wind Load Design  
40# Roof Load Design

### Ultra Additional Features

\*Double Sinks in Master Bath  
\*4'x6' Ceramic Tile Shower at Master Bath  
\*Floorte Pro Series 7 Flooring (per print)

## CUSTOMER CONTACT

Notes:

---

---

---

---